

# CENTER 300 Series THERMO METER

*K, J Type/Data Logger*



- Dual Input
- Triple Display
- Auto Power Off
- Resolution 0.1° C / 0.1° F
- RS-232 Interface
- With Window Software
- 16,000 Records Data Logger

CE

**CENTER**®

CENTER

300 Series THERMOMETER



### • CENTER 300

- TIMER Function
- Auto Power Off
- RS-232 Interface
- REL Function
- HOLD Function
- MAX AVG MIN Function
- Resolution 0.1°C 0.1°F
- Low Battery Indication

K TYPE



### • CENTER 301

- Dual Input
- Dual Display
- Auto Power Off
- RS-232 Interface
- REL Function
- HOLD Function
- MAX AVG MIN Function
- Resolution 0.1°C 0.1°F
- Low Battery Indication

K TYPE



### • CENTER 302

- TIMER Function
- K, J Type Thermocouple
- Auto Power Off
- RS-232 Interface
- REL Function
- HOLD Function
- MAX AVG MIN Function
- Resolution 0.1°C 0.1°F
- Low Battery Indication

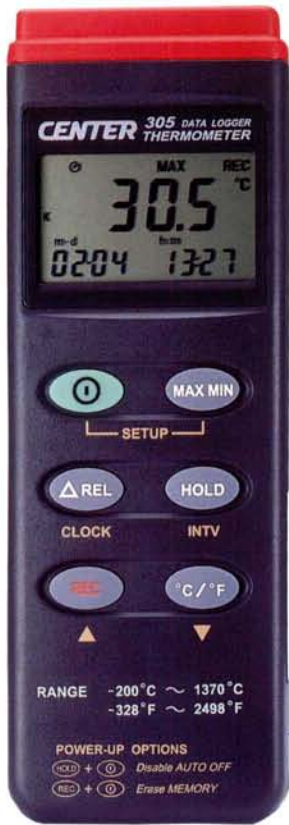
K.J TYPE



### • CENTER 303

- Dual Input
- Dual Display
- K, J Type Thermocouple
- Auto Power Off
- RS-232 Interface
- REL Function
- HOLD Function
- MAX AVG MIN Function
- Resolution 0.1°C 0.1°F
- Low Battery Indication

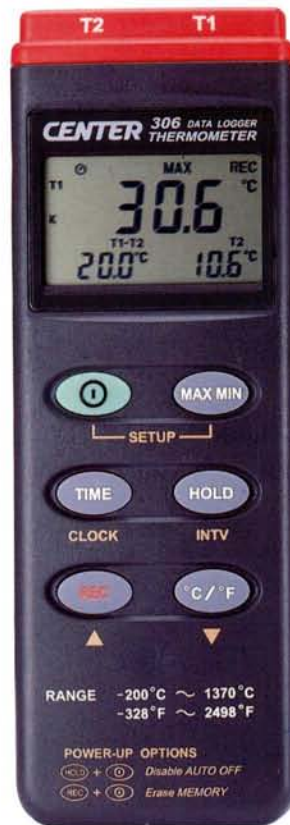
K.J TYPE



• **CENTER 305**

- Triple Display
- Auto Power Off
- RS-232 Interface
- 16,000 Records Data logger
- With Window Software
- REL Function
- TIME Function
- MAX MIN Function
- Resolution 0.1°C 0.1°F
- Low Battery Indication

Data Logger



• **CENTER 306**

- Dual Input
- Triple Display
- Time Function
- RS-232 Interface
- With Window Software
- 16,000 Records Data logger
- Auto Power Off
- REL Function
- MAX MIN Function
- Resolution 0.1°C 0.1°F
- Low Battery Indication

Data Logger

• **FEATURES**

Model	CENTER 300	CENTER 301	CENTER 302	CENTER 303	CENTER 305	CENTER 306
Input Channel	Single	Dual	Single	Dual	Single	Dual
K Type Sensor	•	•	•	•	•	•
J Type Sensor			•	•		
RS-232 Interface	•	•	•	•	•	•
Data Logger					•	•
REL Function	•	•	•	•	•	
TIME Function					•	•
TIMER Function	•		•			
HOLD Function	•	•	•	•	•	•
MAX/MIN Function	•	•	•	•	•	•
Auto Power Off	•	•	•	•	•	•

• **SPECIFICATIONS**

Range: K Type -200 ~ 1370°C (-200 ~ 2498°F)	•	•	•	•	•	•
Range: J Type -200 ~ 760°C (-200 ~ 1400°F)			•	•		
Accuracy	± 0.3% + 1°C ± 0.3% + 2°F	± 0.3% + 1°C ± 0.3% + 2°F	± 0.1% + 0.7°C ± 0.1% + 1.4°F	± 0.1% + 0.7°C ± 0.1% + 1.4°F	± 0.2% + 1°C ± 0.2% + 2°F	± 0.2% + 1°C ± 0.2% + 2°F
Resolution	0.1°C / 0.1°F					

• **GENERAL**

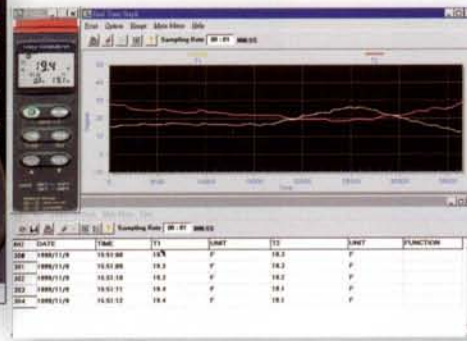
Input Protection	60V DC or 24Vrms Maximum
Operation Temp.	0°C ~ 50°C
Storage Temp.	-20°C ~ 60°C
Battery	9V, NEDA 1604, IEC 6F22, JIS 006P
Dimensions	184(L) × 64(W) × 30(H)mm
Weight	Approx. 210g

# RS-232 Software for Windows 95/98 NT4.0

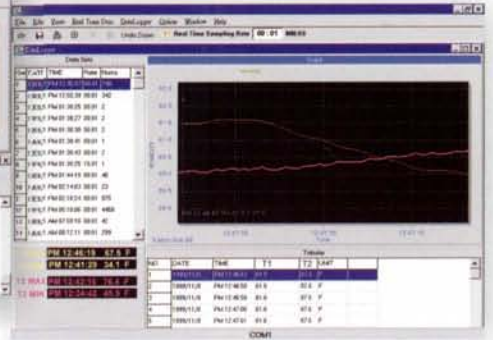
Main Control Window



Real Time Graphic Window



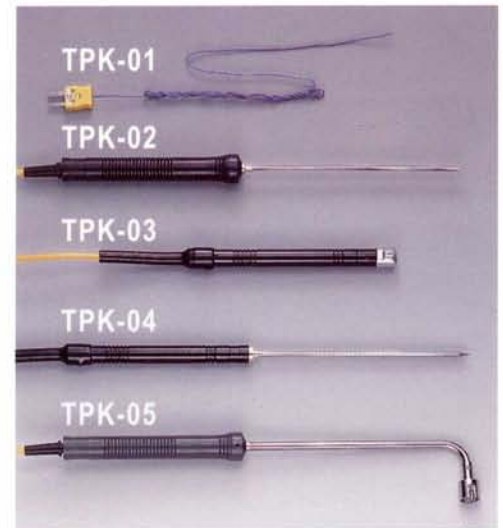
Data List Window



## Triple Display



## Option Accessories



## Accessories

Model	CENTER 300	CENTER 301	CENTER 302	CENTER 303	CENTER 305	CENTER 306
Battery	•	•	•	•	•	•
Manual	•	•	•	•	•	•
Carrying case	•	•	•	•	•	•
K Type bead sensor	TP-K01x 1	TP-K01x 2	TP-K01x 1	TP-K01x 2	TP-K01x 1	TP-K01x 2
RS-232 Cable	Option	Option	Option	Option	•	•
Software	Option	Option	Option	Option	•	•

**CENTER**<sup>®</sup>

**CENTER TECHNOLOGY CORP.**

4/F., NO.415, Jung-Jeng Rd., 238 Shu-Lin, Taipei, Taiwan  
 TEL: 886-2-26763926 E-Mail: center@centertek.com  
 FAX: 886-2-26763925 http://www.centertek.com

Distributed by: