

SMARTER

innovation

FASTER

innovation

EASIER

MX 1000

3.9mm Two Ways Articulations



Applications



AVIATION



POWER GEN



PETROCHEMICAL



OIL & GAS

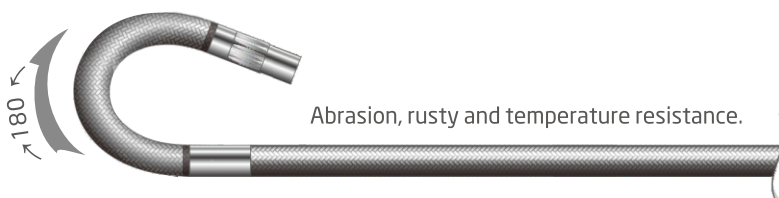


AUTO



QUALITY

- Intuitive touch screen operation.
- 3.9mm small tube fulfills critical and quality inspection.
- 180° bending angle, more inspection areas.
- Full outer braided stainless steel tube provides superior durability abrasion, rusty and temperature resistance.



Touch screen operation

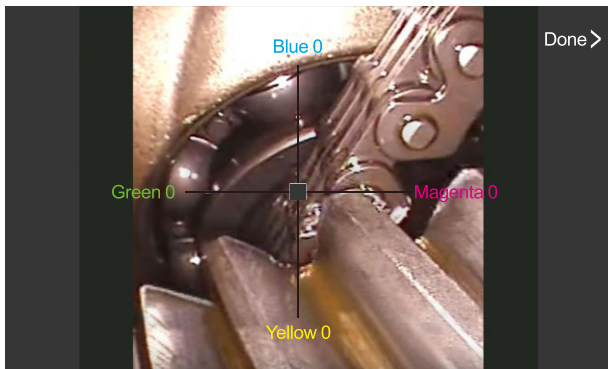


Normal touch screen / Full lamination touch screen

Can be operated under direct sunshine

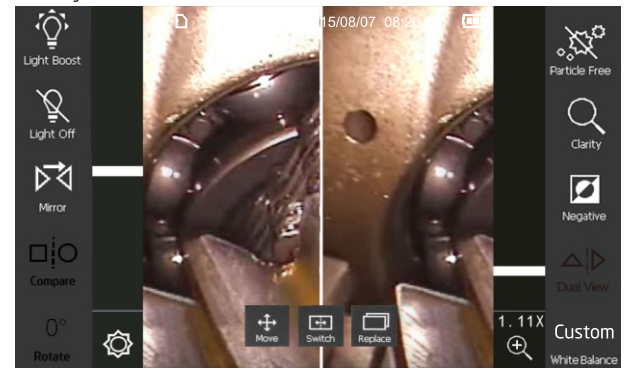
White Balance

Adjust white balance via operation interface.



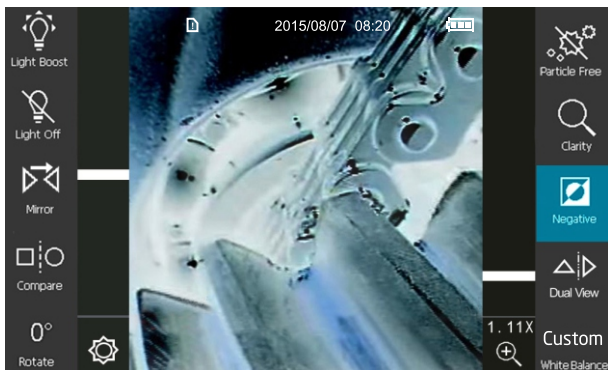
Compare

The side-by-side comparison of a stored image with the live view allows user to verify the difference of an area at different times.



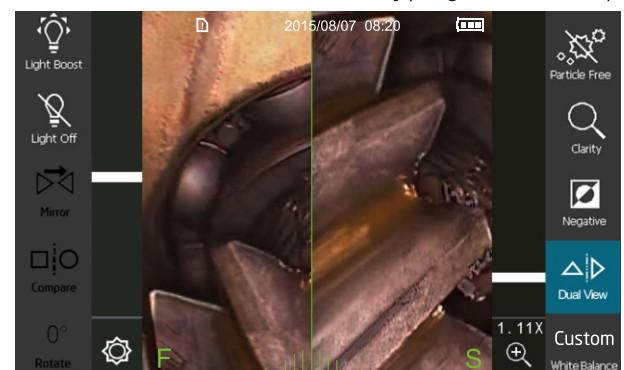
Negative+

Contrast enhancement to stand out cracks and details.



Dual View

To see front view and side view simultaneously (designated lens is need).



ACCESSORIES

Also include: Usb cable, AV cable, clean set, SD card, user manual.



MX1000 main system	
Display	7"LCD (800*480)
Snapshot	400 * 400, jpeg
Recording	400 * 400, AVI
Dimensions	240 * 154 * 47 mm
Weight	1.3kg (286lb)
Dust & Water proof	IP57
Drop resistance	1m
Battery	Rechargeable Li battery, I/P 5Vdc, 3A
Working temperature	-10°C~60°C
Storage temperature	-10°C~60°C
Charging temperature	10°C~60°C
Relative humidity	Max 95%, non condensing
Storage	SD card, up to 32G
AV output	NTSC / PAL
Audio input	Built-in microphone
Brightness Adjust	8 levels (6+2 boost levels)

3.9mm 2 ways articulations tube	
Probe head diameter	3.9mm
Tube length	1.5mm / 3m
Weight	338g / 380g
Articulations	right-left 180° (*)
Probe head material	Stainless steel
Probe material	Outer braided Stainless steel
Light source	Front / Side
FOV	90°
DOF	10mm~100mm
Working temperature	-10°C~60°C
Storage temperature	-10°C~60°C
Resolution	400x400

* The maximum articulation angle may degrade due to the bending loops of tube.