

X1000 PLUS with 4.5mm articulation probe

Sales team

July 17th, 2016

Agenda

- X1000 PLUS-4.5mm
 - Specification
 - Comparison
- Application



Target Industrial Market

- Metal Castings
- Manufacturing(QC/QA)
- Heat Exchangers and Boilers
- Defense/Security/Safety/Rescue
- Railways and Marines
- Aircraft Inspections
- Automotive
- Electronic Assemblies
- Generators
- Construction services



X1000 PLUS 4.5mm Spec

- X1000 PLUS
 - 7” Full lamination touch screen with 28 languages in setting manual
 - Pinch Operation
 - Negative+
 - White balance adjustment
 - Comparison with pictures
 - Hyperion function build in
 - Boost
 - Particle free with mirror adapter
 - 1 meter drop off

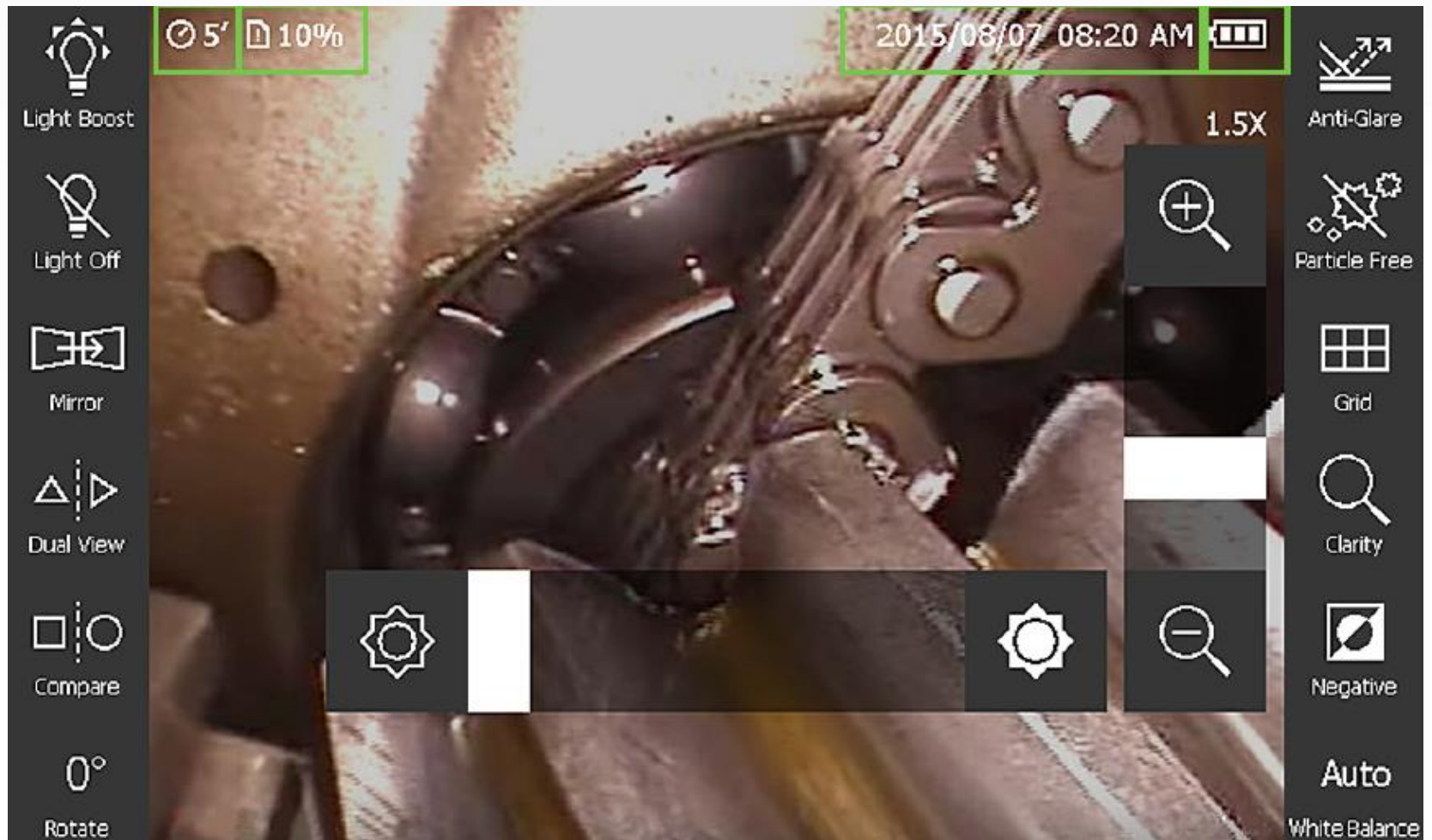
X1000 PLUS

- Full lamination touch screen, can be operated under direct sunlight
 - Benefit is all working environment can apply X1000 PLUS



X1000 PLUS

- All new interface on screen



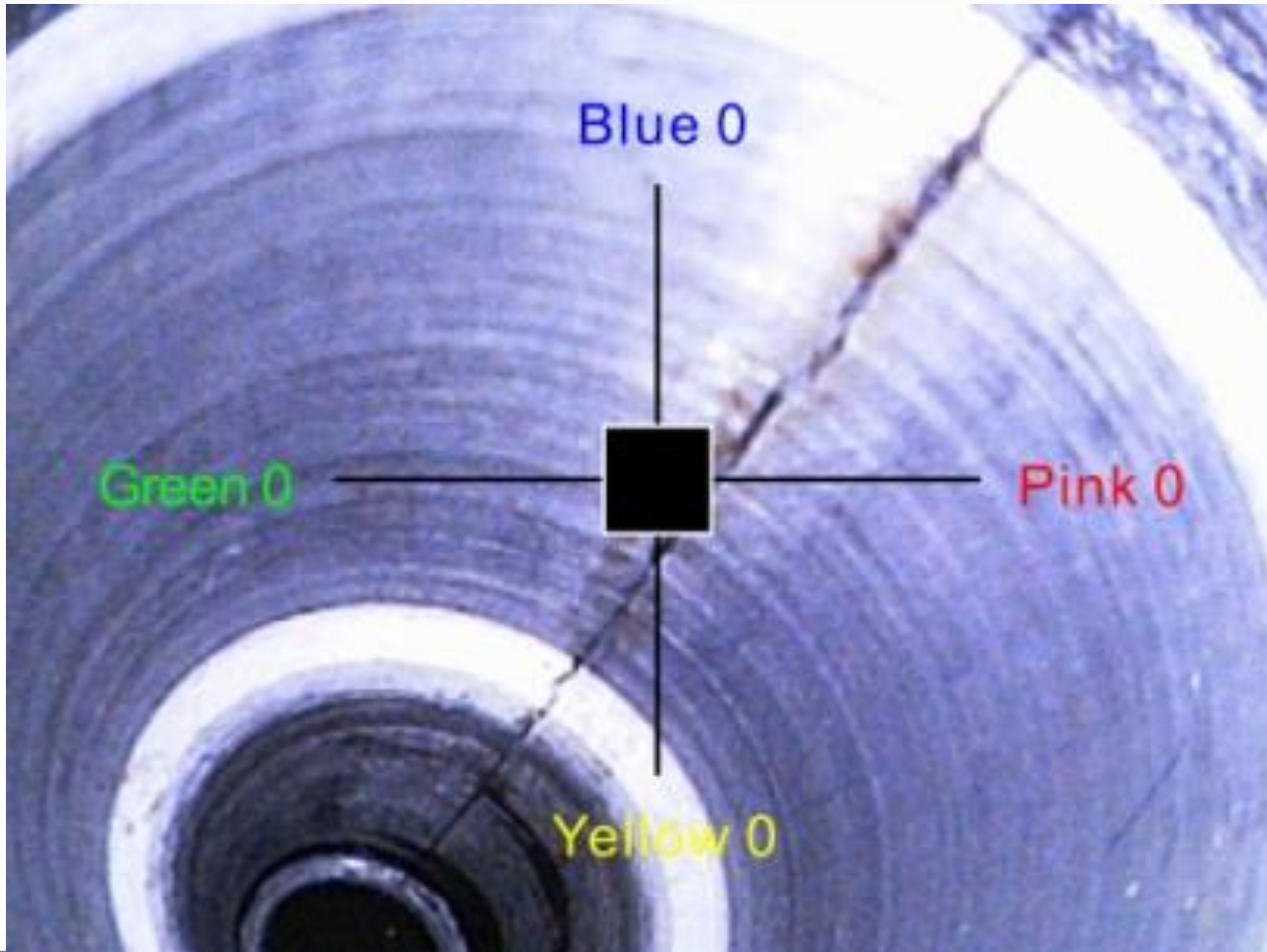
X1000 PLUS

- Negative+
 - Contrast enhancement to stand out cracks and details



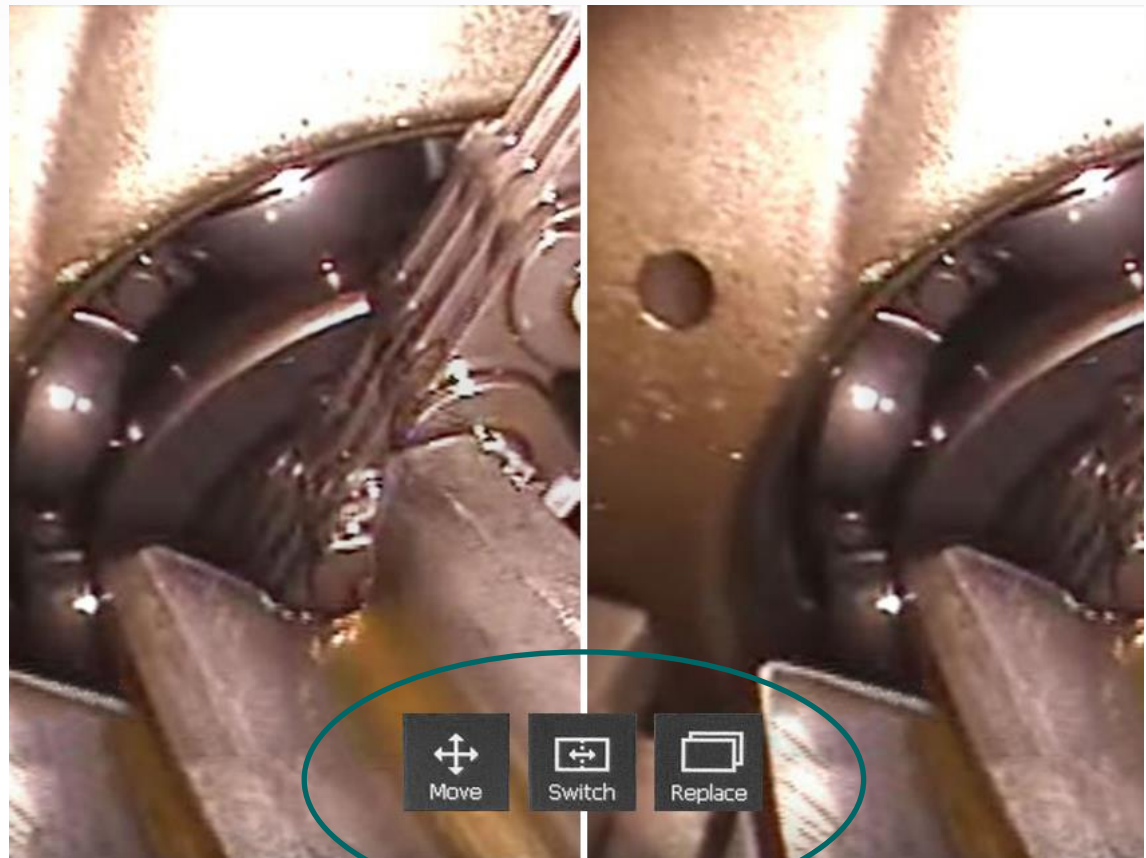
White balance

- Designed for your eyes



Comparison

- The side-by-side comparison of a still image with the live view allows user to verify the difference of an area at different times.



X1000 PLUS 4.5mm Specification

- 4.5mm 2 ways articulation
 - 640*480 as resolution
 - Over 340° articulation in every direction
 - No need mirror adapter for side view
 - The shorter distal tip of camera head
 - Lock mechanism
 - Stainless mesh

Pictures taken by 4.5mm



Comparison

Mitcorp 4.5mm



Rx 3.9mm



Mitcorp 4.5mm Articulation



Over 170°
in every direction

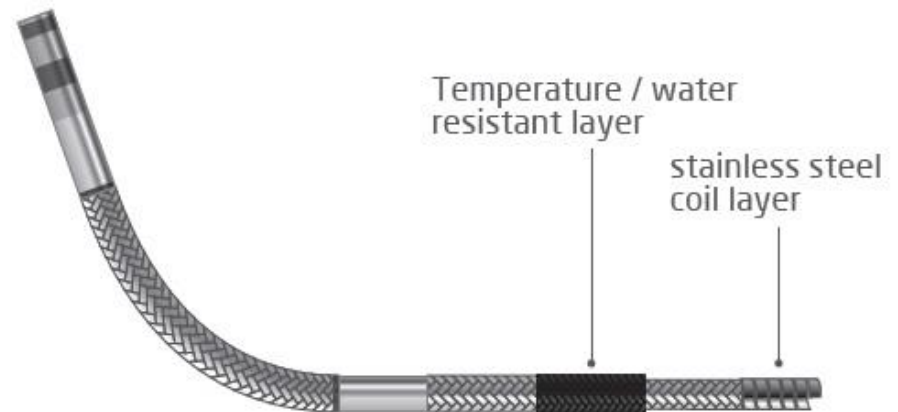


Lock

Snapshot
Light+
Light-



Without
mirror
adaptor



Temperature / water
resistant layer

stainless steel
coil layer

Comparison



←→
12mm

Japan Rx 2.8mm, the shortest distal tip in the market



←→
15mm

Mitcorp 4.5mm, the shorter distal tip



←→
23mm

Mitcorp 6mm, the longer distal tip

X1000 PLUS Series

- For different application with different retail price

4.5mm 2ways



- Camera head: 4.5mm
- 2 ways
- Probe length: 1.5M,3M
- Articulation range: 180°

6mm 360°



- Camera head: 6mm
- 4 ways
- Probe length: 1M, 3M
- Articulation range:180°

10mm PRM100



- Camera head: 10mm
- Probe length: 15M
- Articulation range:0°

X1000 PLUS- 4.5mm Packing



Lower



USB
-AV out
-DC to USB
Extension tube
Holding Tube

In the zip bag:
-User manual
-SD card
-Installation CD

Neck Strap
Clean set



THANK YOU

Mitcorp
INSPECTION REDEFINED