

# Two way articulation probe

Easy control over probe articulation. Allows wider angle views during inspection.



6.0mm probe



Over 300° of view

Front view

Side view

**hyperion** 

Only three buttons to enhance your inspection!



6.0mm  
Articulation probe



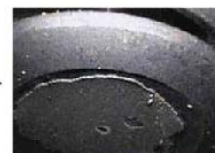
Boost





Anti-  
reflection



Particle free



5.5mm  
Front view probe

Probe	Type of probe	Length of probe
<b>hyperion</b>  5.5mm Front view probe	SM&SR(F)(S)	1m, 2m, 3m
<b>hyperion</b>  6.0mm Articulation probe	SM (F)(S)	1m, 2m