

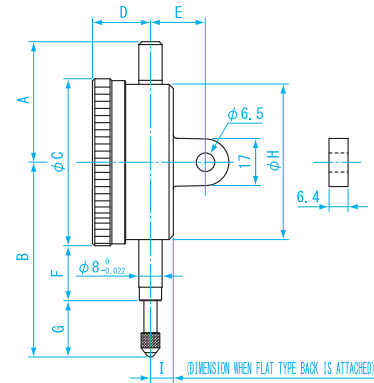


DI-0342



DI-0542

DIMENSIONS



USE • Measuring surface flatness, checking tool set up, axial runout, checking squareness.

MATERIALS

- Body : Steel

FEATURES

- Limit indicator clips included
- O-Ring sealed between inner and outer lid to protect from water or oil
- Jeweled bearings
- White scale plate
- Flat type back and center-lug back included.

Units : mm

Model No.	A	B	C	D	E	F	G	H	I
DI-0342	31	45	42	14	18	14	10	40	7
DI-0542	31	47	42	14	18	14	12	40	7

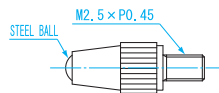
Order No.	Model No.	Graduation (mm)	Measuring Range (mm)	Dial Reading (mm)	Backlash Error (μm)	Measuring Force less than (N)	1 Revolution (mm)	Indication Error 1/10 rev (μm)	Error over entire range (μm)	Repeatability (μm)	Weight
151509	DI-0342	0.01	0~3	±0.50	6	1.5	0.5	8	±14	5	100g
151510	DI-0542	0.01	0~5	±0.50	6	1.5	0.5	9	±16	5	100g

DIAL GAUGE REPLACEABLE TIP



DI-CP

DIMENSIONS Units : mm



USE • Dial gauge probe tip

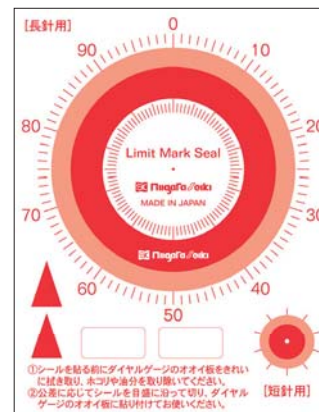
MATERIAL • Measurement tip : steel ball

Compatibility Table

Model No.	Applicable Dial Indicator		
DI-CP	DI-1058	DI-3058	DI-5058
	DI-8058	DI-10078	DI-0342
	DI-0542		
DI-CPK	• Ex-model No.		
	DI-1220A	DI-1220AS	DI-1102A
	DI-1810A		
DI-CPK	DI-10 (Rev. since 2007)		
	DI-1060SC	DI-0560SC	DI-0160SC DI-10KD

Order No.	Model No.
151500	DI-CP
151675	DI-CPK

DIAL GAUGE LIMIT MARK STICKER



USE • GO/ NO GO judgment for diameter inspection

MATERIAL • Pobick #100Rt-H (High strength, transparent, removable)

FEATURES • Acceptable range is clearly visible. Ideal for inspection of mass produced parts.
• Includes arrow pointers for use with notes, indicating alert points, etc.

SPECIFICATIONS

- Applicable dial gauge : DIAL face more than φ 52mm
- Sticker outside diameter : long indicator ... φ 51.5mm
Short indicator ... φ 10mm

- Contains 10pcs

Order No.	Model No.	Quantity	Weight
151674	DI-LMS	10	20g

DIAL GAUGES

DIAL INDICATORS

THICKNESS GAUGES

BORE GAUGES

CALIPER GAUGES

HARDNESS-TENSION GAUGE

MAGNETIC BASE