

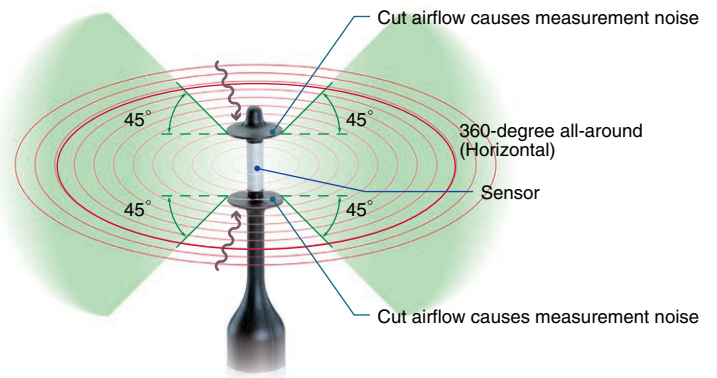
Thermal Anemometer with Dumbbell-Shaped Sensor



Item no.	Storage
TA411DA	Temporary Data Storage
TA411DB	Temporary Data Storage/Constant Data Storage

The world's first handy type anemometer with dumbbell-shaped sensor.

Wide-Angle Detection Area:
Horizontal 360-degree all-around / Vertical 90-degree
Anemometer capable of highly precise & rapid measurement on conditions of zephyr(0.06m/s) & unstable wind direction.



Purpose of Use

- ◆ Measuring wind velocity (air volume) of air conditioner & air duct
- ◆ Maintenance of air conditioner
- ◆ Measuring wind velocity and air temperature & volume of air duct
- ◆ Measuring wind velocity of air outlet
- ◆ Performance inspection of air conditioner
- ◆ Monitoring wind velocity and energy saving performance
- ◆ Monitoring wind velocity of air inlet



Maintenance of Sensor

Measuring dusty, dirty and oily air without bothering grime
Washing sensor by user



Correcting wind direction in use of vane type and hot-wire type

Spare Parts

Temporary Data Storage

Recording the current reading of <wind velocity and air temperature>/<wind velocity and air volume> by pressing [STORE] button
A maximum number of 99 data records can be stored

Time Constant Data Storage (TA411DB)

TA411DB can automatically record consecutive data on the interval by setup
Start of record ⇒ Stop ⇒ Resume by pressing [START/STOP] button

Software

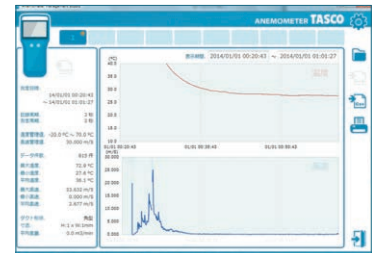
TA411DA

Outputting the CSV file

TA411DB

Outputting the CSV file and graphing data

★ Software download from Homepage



Specifications

Measuring Method	Temperature	Wind velocity	Air volume
Measuring Object	Air		
Operating Environment (Pressure)	Atmosphere(700~1300hPa)		
Operating Environment (Humidity)	0~95% relative humidity (RH) No dew		
Operating Environment (Temperature)	0~+40°C		
Measuring Range of Sensor	-20~+70°C	0.06~30m/s	0~999999m ³ /min
Measuring Resolution of Sensor	0.1°C	0.01m/s	1m ³ /min
Error Range of Sensor	±2°C	±(5% of reading)+0.12m/s	
Response Time	3 seconds (0~5m/s)		
Maximum Number of Data Storage	TA411DA:Temporary Data: 99 TA411DB:Temporary Data: 99 Time Constant Data:15,000		
Power Supply	1.5V(AA) x 6 Batteries (8 Hours/Alkaline cell) * may change on operating environment		
Size Information	Main unit: 195 x 90 x 35mm Sensor Rod : 9mm x 260mm Cable : 4mm x 2000mm		
Net Weight	Approx. 520g (Sensor Rod, Batteries Inclusive)		
Standard of Waterproof & Dustproof	Main unit & Cable: IP65 Sensor Rod : IP67		
Major Features	Auto Power-Off, Backlit, Hold Button Function		
Contents	Main unit, Sensor Rod, Carrying Case, Batteries, USB Cables, Handy Straps, User's Manual		

Software

Dumbbell-Shaped Sensor



Item no. TA411D-1P

Extendable Rod



Item no. TA411D-1S

- ◆ Length...225~1080mm
- ◆ Extendable Rod is enable to measure easily and safely at high place,narrow place and out side of window.