



F500 (FASTA)

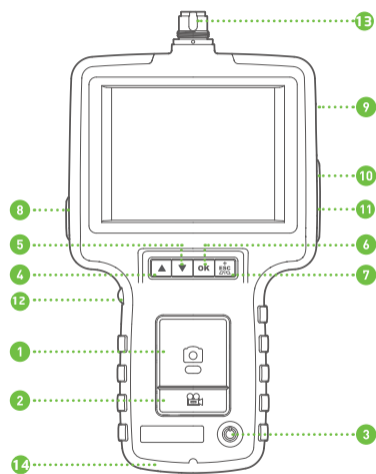
Videoscope system

User Manual

Table of Contents

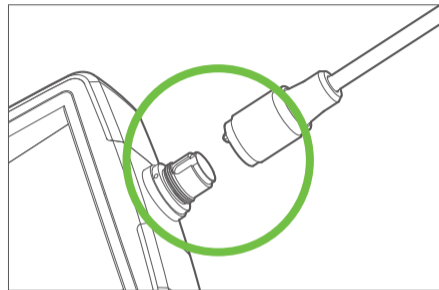
System Outlook.....	2	• Taking Photos	12
Getting started.....	3	• Video Recording	13
System Environment.....	4	• Viewing Photo/Video	13
Multi-function Keys	5	• Zoom-in	14
Menu Operations		• Mirror View.....	14
• Delete All	7	Specifications.....	15
• Deleting a Specific Photo.....	7		
• AV Output.....	8		
• Setup Date/Time	8		
• Setting Time Display	10		
• Language	10		
• TV System	11		
• Auto Power Off.....	11		
Operating Instructions.....	12		
• Power On/Off	12		

System Outlook



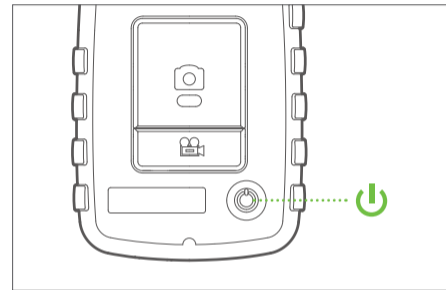
- 1 Record
- 2 Snap
- 3 Power
- 4 Previous
- 5 Next
- 6 **OK** OK / Menu
- 7 ESC / ZOOM / MIRROR
- 8 USB port
- 9 SD Port
- 10 TV Out
- 11 AC Jack
- 12 Light Adjustment
- 13 Insert tube Connector
- 14 Hanger Hole

Getting started



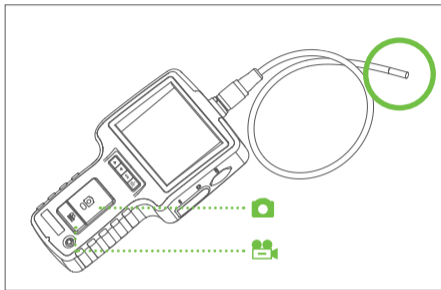
Step 1

Insert the insert tube into the connector according to the direction of the red align dot and tighten the screw nut.





Step 2

Press and hold the power button for 3 seconds until the image is displayed on the monitor.



Step 3

Aim the camera lens at the selected area. Press  to capture a image, or press  to start recording a video.

System Environment

This product provides three simple working modes: Preview, Browse and Manual Mode.

Preview Mode

When the system turns on, the preview mode will be activated automatically, user can take pictures and record videos.

Browse Mode

Press   to view photos and videos stored in the SD card and also delete files.






Manual Mode

User may complete their preferences setup and file management here.

NOTE: THE SYSTEM RETURNS TO PREVIEW MODE AUTOMATICALLY AFTER 150 SECONDS WITHOUT ANY RESPONSE IN MANUAL MODE.

Multi-function Keys

Each button on the system performs a unique function depending on the Mode when system is operated.

FUNCTION	IN PREVIEW MODE	IN BROWSE MODE	IN MANUAL MODE
	Switch to Browse Mode to view photos and videos	Move to previous photo or video	Move up in the main manual
	Switch to Browse Mode to view photos and videos	Move to next photo or video	Move down in the main manual
OK	switch to Manual Mode	Play/Pause video	Execute selected command
	Press once to Zoom in 2x. Press and hold 3 seconds for Mirror View	Return to Preview Mode	Return to Preview Mode
	Capture a photo	N/A	N/A
	Press once to start recording video, press again to stop recording	Delete photo	N/A

Menu operations

Overview

Press OK button into Manual Mode and select the setting needs to be adjusted.



DELETE ALL

Delete all files in the SD card.

AV OUTPUT

To send the video signal out through the AV port. The monitor will turn black until you execute this command again.

DATE / TIME

To set up system time.

LANGUAGE

To select the operation language.

TV SYSTEM

Set up your video format.

AUTO POWER OFF

Select 5, 10, 15, or 30 minutes to activate system auto power off setting.

Delete All (Delete all files in SD)

Step 1 Press OK in Preview mode.

IMAGE STATUS : SHOWING THE MAIN MANUAL.

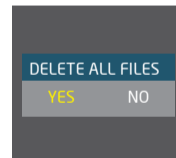
Step 2 Press ▲ or ▼ to "DELETE ALL" command.

Step 3 Press OK.

IMAGE STATUS : "YES" OR "NO" OPTION APPEARS.

Step 4 Use ▲ or ▼ to select "YES" "NO".

Step 5 Press OK to delete all files.



Deleting a specific photo (Browse mode only)

Step 1 Enter Browse mode, then press ▲ or ▼ to find out the photo or video you wish to delete.

Step 2 Press .

IMAGE STATUS : DELETE CONFIRM.

Step 3 Press OK to delete selected file, or press ESC to skip.



AV OUTPUT

Step 1 Plug in the AV cord into the AV socket located on the right side of the system.

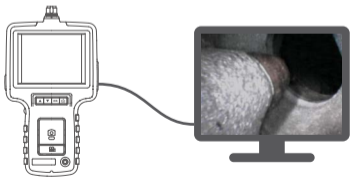
NOTE : PLEASE PLUG THE OTHER END OF THE AV CORD INTO THE "AV IN" SOCKET ON THE EXTERNAL MONITOR.

Step 2 Press OK in Preview mode.

Step 3 Press ▲ or ▼ to select to "AV OUT" option.

Step 4 Press OK.

IMAGE STATUS : IMAGE WILL BE TRANSMITTED TO THE EXTERNAL MONITOR.



Date/Time Setup

Step 1 Press OK in Preview mode.

Step 2 Press ▲ or ▼ to select Date/Time.

Step 3 Press OK to activate the setting.

Step 4 Press  to increase the number or  to decrease.

Step 5 Press ▼ for next adjustment.

Step 6 Repeat step 4 and 5 until the correct time/date are set up.

Step 7 Press OK to complete the setting.



Setting Time Display

Step 1 Press OK in Preview mode.

Step 2 Press ▲ or ▼ to select "DATE/TIME".

Step 3 Press OK.

Step 4 Press ▲ or ▼ to "Display" option.

Step 5 Press  to switch the "Display" function between ON/OFF.

IMAGE STATUS : PRESS  ONCE FOR ON, PRESS AGAIN FOR OFF.

Step 6 Press OK to complete set up.

Step 7 Press ESC to return to Preview mode.



w/o Time Display Off



with Time Display On

Language

Step 1 Press OK in Preview mode.

Step 2 Press ▲ or ▼ to select "LANGUAGE".

Step 3 Press **OK**.

Step 4 Press ▲ or ▼ to select the operation language.

Step 5 Press **OK**.



TV system

TV System

Step 1 Press OK in Preview mode.

Step 2 Press ▲ or ▼ to select to "TV SYSTEM" .

Step 3 Press **OK**.

Step 4 Press ▲ or ▼ to select NTSC/PAL.



Auto power off

Step 1 Press OK in Preview mode.

Step 2 Press ▲ or ▼ move to "AUTO POWER OFF" option.

Step 3 Press OK.

Step 4 Press ▲ or ▼ to select desired time length, to activate press OK, or select OFF to skip.



Operations

Power On/Off

Step 1 To turn on the system, press and hold the ⏻ button for 3-5 seconds until system start.

Step 2 Press and hold the ⏻ button for 3~5 seconds to turn off the system.



⏻ BATTERY CAPACITY
▬ SD CARD MEMORY CAPACITY

Taking Photos

Press 📷 button in Preview Mode to take a photo.

IMAGE STATUS : RETURNS TO PREVIEW MODE AUTOMATICALLY AFTER PHOTO IS TAKEN.



Recording Video

Step 1 Press  button to start recording video .

IMAGE STATUS : RECORDING TIME WILL APPEAR AT THE LEFT BOTTOM THE SCREEN.

Step 2 Press  button again to stop recording.

IMAGE STATUS : RECORDING TIME DISAPPEARS.



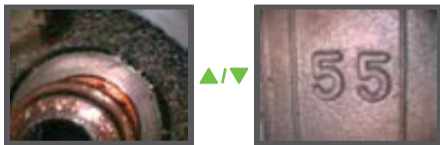
Viewing Photo/Video

Step 1 Press  or  in to Preview Mode.

IMAGE STATUS : DISPLAYING THE LATEST PHOTO/VIDEO.


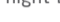
Step 2 Press  or  again to view from the first or last photo/video in the SD card.

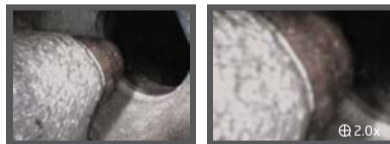
IMAGE STATUS : ALL FILES WILL BE STORED CHRONOLOGICALLY.



NOTE : WHEN VIEWING VIDEOS, THE VIDEO WILL BE PLAYED AUTOMATICALLY UNTIL IT ENDS AND THEN THE NEXT PHOTO OR VIDEO WILL BE DISPLAYED.

Zoom-In*

Press  button once, the screen will show 2X zoom in view while  will show on the right bottom of the screen.





BEFORE ZOOM-IN

AFTER ZOOM-IN

Press again to return to the original view

Mirror effect*

Press and hold  button for 3 seconds to activate the mirror view while  will show on the right bottom of the screen, press and hold for 3 seconds again to return to original view.



WITHOUT MIRROR EFFECT

WITH MIRROR EFFECT

Specifications

System			
Dimension	117.5 x 207 x 37mm	Frame Rate	30 fps
Weight	383g	Exposure	Automatic
Power	Rechargeable Li-Polymer Battery 3.7V Power supply AC 100-240V 50-60Hz Power consumption DC5.5 2A	White Balance	Fixed
Display	3.5 TFT LCD	Charging Temperature	10°C-40 °C
Recording Medium	SD Card (4G included)	Working Temperature	0°C-60 °C
Video Output Format	NTSC & PAL	Storage Temperature	0°C-60 °C
Video Output Interface	AV out		
Compression Format	Compliant with MPEG4		
Still Image Storage Format	JPEG		

Caution

- ⚠ This product is designed for industrial use only. Do not use the system for human or any other biological inspection.
- ⚠ Do not disassemble the product, it might cause shock hazard and damage the unit.
- ⚠ Use only recommended components or accessories. Unauthorized accessories and components may cause damage to this product.
- ⚠ To avoid danger, do not put the insert tube into any flammable liquid or gas. Oil Passed: Unleaded Gasoline, Machine Oil, Diesel, Brake Oil (DOT 4), Transmission Oil, Neutral Cleanser.
- ⚠ Do not use this product in a fuel tank or other dangerous environment such as a gasoline or alcohol storage tank.
- ⚠ Do not bend the insert tube over 180 degrees during usage or storage.
- ⚠ Do not remove the SD card while capturing photos or videos. This can cause a loss of the image or video recorded and may damage the SD card.
- ⚠ Avoid direct exposure to sunlight for long period of time. Store the system in a cool, dry and well-ventilated place.
- ⚠ Please charge the battery in room temperature between 10°C~40°C(50°F~104°F), to optimize charging capacity.

Note

