

Mitcorp

INDUSTRIAL VIDEOSCOPE

■ CLEARNESS ■ SHARPNESS ■ BRIGHTNESS



X2000 HD VIDEOSCOPE

Best Image Viewing Experience

The X2000 features a 7" LCD touchscreen that delivers not only crisp and clear images but also features a manual exposure which works very similar to that of a smartphone. This makes it not only very helpful but also very convenient to use.



Wide view angle 7" IPS TFT-LCD



Manual exposure by fingertip

Advanced File Management

Never get lost again in the countless numbers of images and videos you take. The X2000 HD offers a file management system which allows you sort your footage into folders, to tag them and to add notes or annotations. This makes keeping track of all your inspections easy and convenient.



Custom build file folder by 'SESSION'




Custom photo overlay text by 'TAG'

Versatile Output Connectivity

HDMI port to TV/monitor for HD quality image viewing

USB type C port to PC as Web-Cam or SD card reader

Wi-Fi connect to mobile devices to view and share pictures. Dedicated APP download (VideoscopeNOW )



Excellent User Interface

A vast range of different functions ensure the best user experience, catering all your individual needs for your next inspection.



Front /side Dual view at once (with mirror)



Supports image sharpness fine tuning



Rotate the live view clockwise to get the best visual angle



3 stage temperature warning & auto shut down function



Patented particle free effect (with mirror)



Editable image annotation

Use Case:

Combustion Chamber & Turbine inspection in the aviation industry

The X2000 HD videoscope is a perfect companion for this challenging task. In this case the X2000 system was used in combination with one of our articulation probes. Not only does this combination provide high quality videos but also outstanding image quality of 1600*1600 pixels.

The small diameter of 3.9mm and the 120° field of view as well as the 140° bending angle allow the technician to move the probe freely within the area to be inspected.



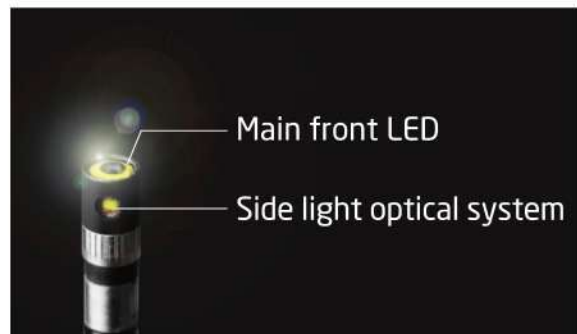
● Super resolution image ●



New HD Probes



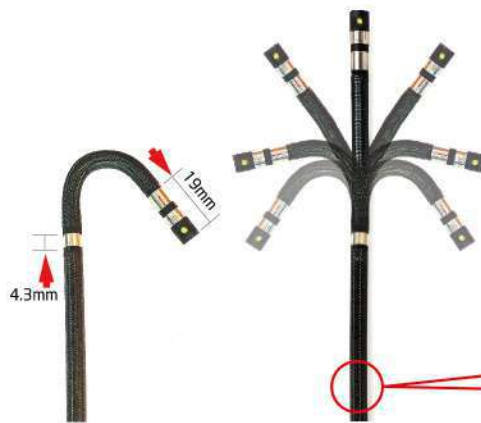
Smooth mechanic articulation control system
Move & lock joystick



- 100°C resistance camera tip (6.0mm tube)
- Ultra-luminance front LED
- Patented side-luminance optical system



High rigidity tube (35cm)



Shorter distal end & bending radius



Scratch resistance
tungsten braids

HD Image Quality

Stunning video quality and crisp images, all without compromising probe size or maneuverability. Our new 3.9mm inspection probes are the combination of a small, flexible design and flawless image quality. The comprehensive features of our X2000 System in combination with our new HD probes will definitely elevate your inspections.



3.9mm



6.0mm

FOV: Wider Than Ever Before

- The enhanced field of view (FOV) of our new 3.9mm HD lenses allows you to see in a wider angle than ever before. Especially in combination with the shorter probe tip and the large articulation angle of our probes, it allows for a comprehensive inspection during which no flaw will remain undetected.



2560*1440 output by 6.0mm HD probe
(30mm distance)



1600*1600 output by 3.9mm HD probe
(30mm distance)

DOF (Depth of Field)

The depth of field (DOF) needed for an inspection, can vary depending on the application field for your videoscope. Airplane turbines for example need a different focal length than the engine block of an automotive. Mitcorp offers a variety of different focal lengths to fit your needs.




2560*1440 output by 6.0mm HD probe
(10mm distance)



1600*1600 output by 3.9mm HD probe
(5mm distance)

X2000 System Technical Specifications

X2000				
<div></div> <div>* High temperature during charging/operation may cause degradation of battery performance and life.</div>				
Display		7" LCD, Resolution 1024x600	Weight	1480g
Power Supply	AC adapter	100V~240V, 12V 2.5A. 50-60Hz		
	BATTERY	Rechargeable Li Battery 3.6V 9800 mAh, approximately operation time: 5hrs, charging time: 4hrs		
Video Output	HDMI	TYPE D; HDMI 1.4 transmitter with 3D format and CEC support		
	USB	USB TYPE C, supporting USB full-speed and high-speed data transmission		
	Wi-Fi	IEEE802.11B/G		
Operating temperature ^(*)		In air 0~45°C, with AC power adapter: 0~40°C, charging temp: 0~35°C		
Storage temperature		-10°C~70°C		
Drop resistance		1m		
Relative humidity		Max 95% non-condensing		
Dust and waterproof		IP 57		
Insert Tubes interchangeability		6.0 mm HD series; 3.9 mm series; 2.8 mm		
Software features		Recording management		
Image features	Digital zoom 3X, 10 steps brightness control	Storage media		SDHC up to 32G
Image effect	Clarity-on / off	Overlay		YY/MM/DD h:m, battery capacity
Annotation	10 text annotation (24 characters)	Thumbnail image display		9 grids album mode
Timestamp / watermark	For snapshot / video recording (on / off)	Still image	Resolution	2560x1440 (S-HD); 1280x720 (HD)
Image management	User define pic / video folder available		Recording format	.jpg
Image display functions	Light boost, light off, mirror, grid, compare, wireless, particle free, dual view, light direction, negative, auto white balance	Video	Resolution	1920x1080
			Recording format	.mov / H.264
			Audio input	Built-in microphone (on/off)
White balance	Manual adjustable (default, calibration, custom)	Frame Rate		30FPS
Accessories				
HDMI cable (AV-out)		1.8m, HDMI 1.4a, D TYPE		
USB cable (data transfer)		1m. type C to standard type A		
USB charging cable		1m, USB-DC jack (for power bank) It is recommended to use a 5V~12V, 2A mobile power bank. An output under 2A will not charge the battery and only provide operation power supply		
SD card		32G		
DC power adapter		100V~240V, 12V 2.5A 50~60 Hz		
Shoulder strap		Polyester		
Hand strap		Polyester		
Sun visor		Steel / Plastic		
Insulation cap		Ø20mm, 90mm rubber		
Trolley case		HDPE EVA		

MIL-STD compliance

Item	Standard (Method)
Vibration Test (Packaged)	MIL-STD-810G-CHG-1 Method 514.7
Transit Drop Test (Packaged)	MIL-STD-810G-CHG-1 Method 516.7
Salt Fog Test	MIL-STD-810G-CHG-1 Method 509.6
Humidity Test	MIL-STD-810G-CHG-1 Method 507.6
Explosive Atmosphere	MIL-STD-810G-CHG-1 Method 511.6

Options	60D4W-F_TU-M	60D4W-F_TU-F	39D4W-F_TU-M	39D4W-FS_TU-M	28D4W-F_TU-M
Probe head diameter	6.0 mm		3.9 mm	3.9 mm	2.8 mm
Probe head length	19.3 mm		13 mm	21.6 mm	10.1 mm
Mirror Adaptor	Side / Dual view		n.a		
Direction of View	Front view		Front	Front + Side 90°	Front
Illumination	Front / Side LEDs		Front LED	Front + Side LED	Front LED
Field of View (FOV)	90°		120°		
Depth of Field (DOF)	10 mm~100 mm	25 mm~∞	5 mm~100 mm	5 mm~100 mm	3 mm~infinite
Still image resolution (.jpg)	2560*1440 (S-HD)		1600*1600	(Dual)1600*1600	800*800
Video resolution (.mov)	1920*1080		800*800	(Dual)800*800	400*400
Articulation angle	2 m, 3 m full ways ≥ 120°; 5 m, 7 m full ways ≥ 80°		Full way >140°	Full way >120°	Full way >110°
Probe length	2 m / 3 m / 5 m / 7 m		1.5 m / 3 m	1.5 m	1.5 m
Operating temperature	In air: -10~-100°C ; In water: 10~30°C				In air :-10~80°C ; In water: 10~30°C
Probe head material	Stainless Steel				
Probe material	Tungsten braid				
Joystick console dimensions	(WxDxH) 139.4x193x84.2 mm (w/o SR and insert tubes)				
Joystick console buttons	Brightness+, Brightness-, snapshot / record				
Lock and move	Joystick / Unlock switch on console				
Dust and water proof	Joystick console: IP54 ; Insert Tube: under water 1m for 30 minutes				
Relative humidity	Max 95% non-condensing				
Liquid resistance	Operable when exposed to machine oil, light oil or 5% saline solution				
Storage temperature	10°C~70°C				
Rigid sleeve	for 6.0 mm probe		for 3.9 mm probe / 2.8 mm		
	OD: 8 mm / ID: 7 mm Protection: OD: 10 mm Extension joint ring: OD: 11.2 mm		OD: 6 mm / ID: 5 mm Protection: OD: 8 mm Extension joint ring: OD: 10 mm		
	Grip material: Rubber / Aluminum / Plastic ; Tube material: Stainless steel				
Trolley case	HDPE EVA with storage reel				

Trolley Case & Accessories

Ruggedized Storage



Built-in storage reel for tube



IP67 trolley case with extendable handle

Accessories



* also includes: cleaning set, SD card, user manual



website: www.mitcorp.com.tw

✉ e-mail: sal@mitcorp.com.tw

2F., No.75, Wenhua 1st Rd., Guishan, Taoyuan 333, Taiwan
T+886-3-328-7177 F+886-3-328-7176

© 2020 Medical Intubation Technology Corporation (Mitcorp).
All rights reserved. Design and specifications are subject to change without prior notice.
Actual product and accessories may differ from illustrations. Errors and omissions excepted.
Reproduction in any manner without written permission of Mitcorp is strictly forbidden.



Mitcorp



Mitcorpglobal



Mitcorpglobal



Mitcorp INDUSTRIAL VIDEOSCOPE

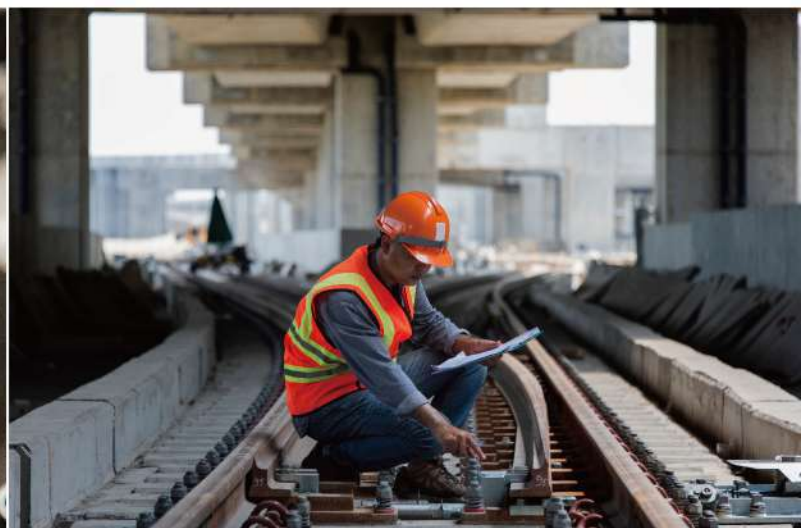
■ CLEARNESS ■ SHARPNESS ■ BRIGHTNESS



Flexibility Redefined | X750

Flexibility and Power on the go

Designed for applications where high mobility is needed, the X750 is lightweight, rugged, and provides high-resolution images and advanced imaging functions that allow workers to fulfill their tasks in even the most challenging environments.



PRODUCT CHARACTERISTICS



FLEXIBILITY

- Lightweight
- Ergonomic Shoulder Strap and Roll up Tubes
- Interchangeable Probes and Batteries
- One-Hand Operation

CONNECTIVITY

- Wi-Fi, HDMI, USB Type C output supported
- Controllable via VideoscopeNow App
- Exclusive GPS mark on photos for utility

INNOVATION

- Backside Camera with GPS
- Backside LED Flashlight function
- Detachable Screen Module
- Custom Button on Joystick

PRODUCTIVITY

- SESSION/TAG Image Storage Setting
- Comprehensive Photo Annotation Function
- Report Assist Software
- New launched "Insight" report generation & GPS mapping software. (Optional)

DURABILITY

- IP 67 Tungsten Braided Insertion Probes
- 100°C Heat Resistant Camera Tip
- IP 54 Console Unit
- 1m Drop Resistant

TRUE SIGHT

- Super Resolution
- Fine Image Quality
- Advanced Imaging Functions

Flexibility

Designed for portability and versatility

Lightweight

The X750 is extremely lightweight, with the whole system weighing only 1.2 kg.

Ergonomic

The handy design, the shoulder straps, and the roll-up tubes of the X750 allow for one-handed operation.

Flexible

Interchangeable probes and batteries improve productivity and give you the necessary flexibility for even the most complex applications.



Interchangeable Probes (3.9mm/6.0mm)

One-Hand Operation

Exchangeable Li-Batteries
(3 hours operation per battery)

Connectivity

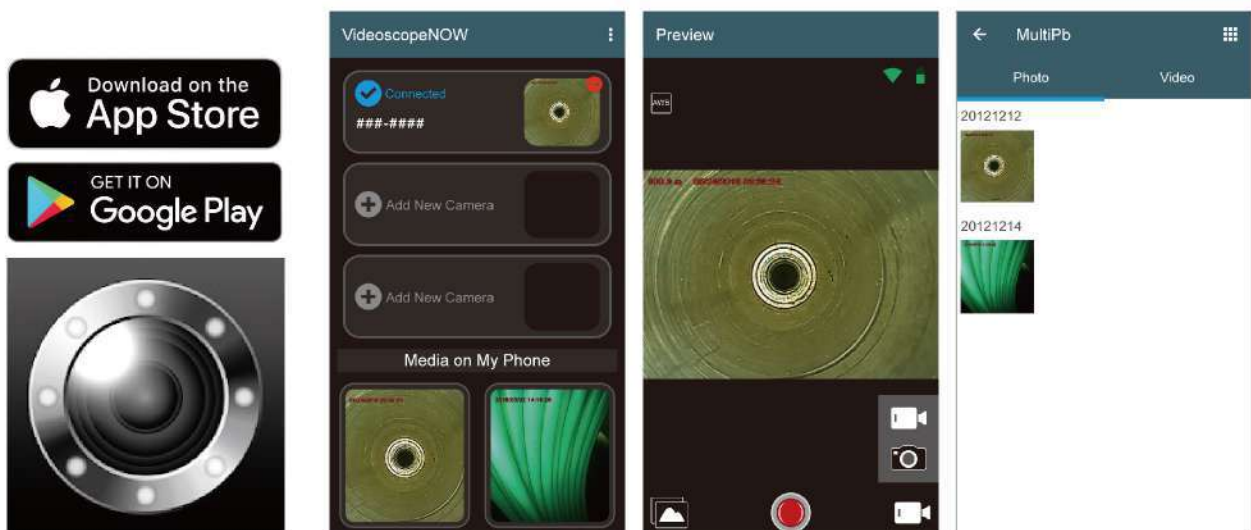
Benefit from multi-connection Solutions



Comprehensive Solutions

Controllable Via App

The X750 can link with mobile devices via our VideoscopeNow App. The app lets you control the X750 remotely and download photos and videos onto your device.

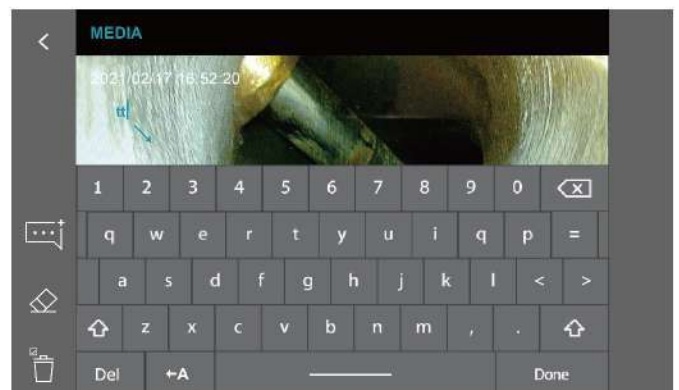
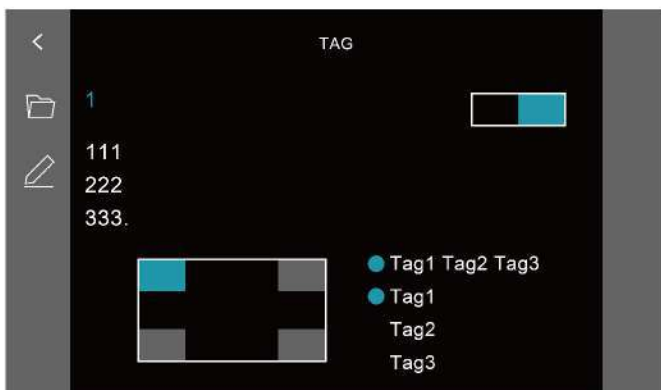
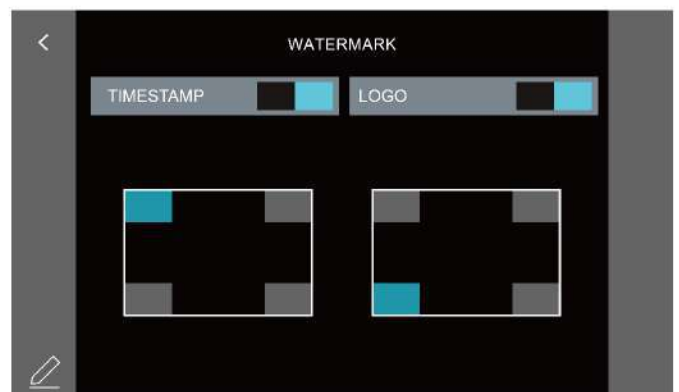
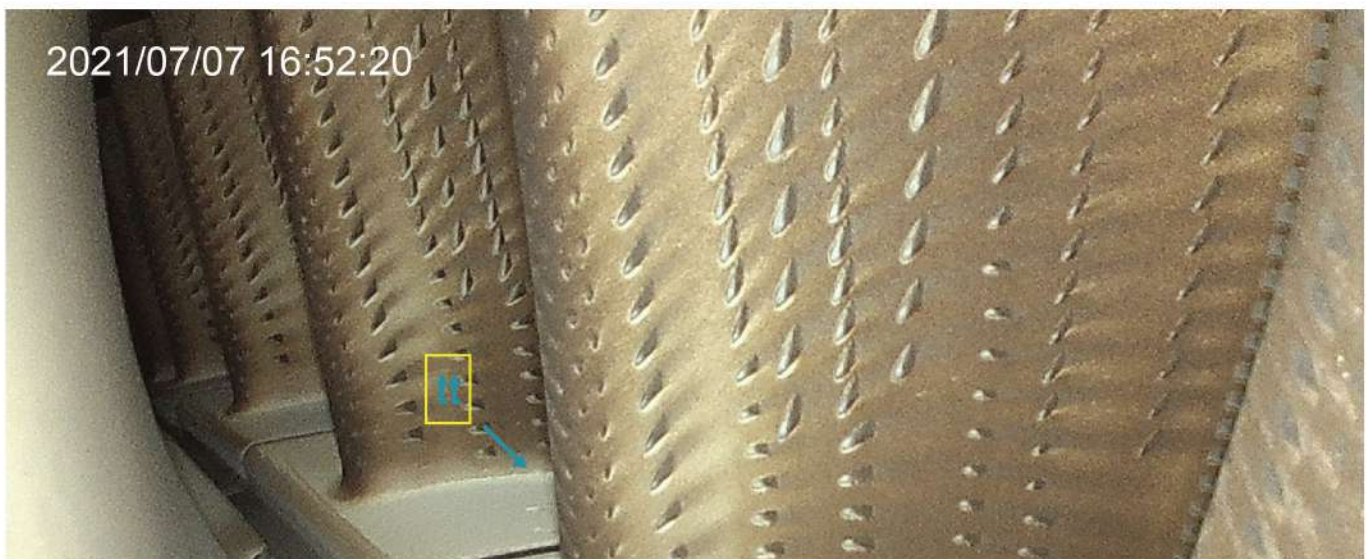


Productivity

Advanced File Management

The X750's software includes a file management system that allows you to sort photos and videos into session folders. You can write notes or annotations and add them to your images. A compare function enables you to compare the live view image to gallery images.

You can also include logos and watermarks as well as session tags. These functions make keeping track of all your inspections easy and convenient.



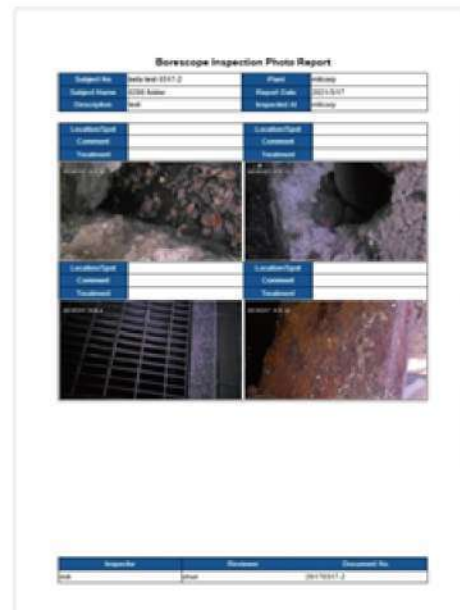
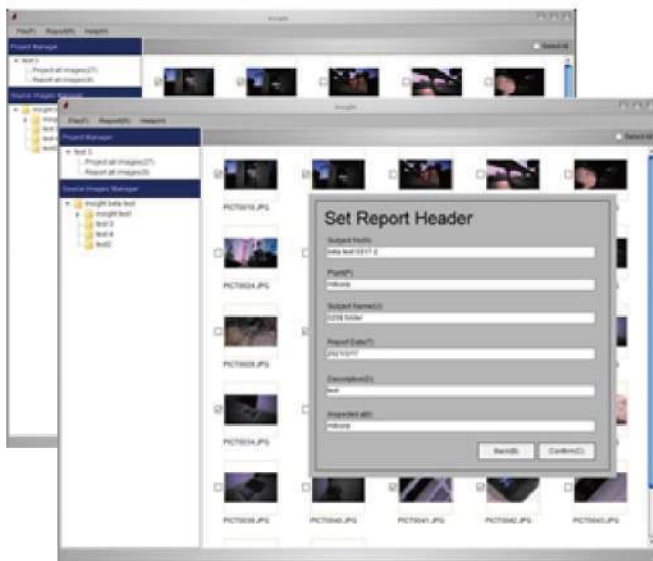


From the Site to the office:
Improve your inspection workflow

Report Generation



Generate reports in just 4 steps. Review images and add comments within a well-integrated work process. It significantly improves the workflow and reduces the time needed to sort through large numbers of images.

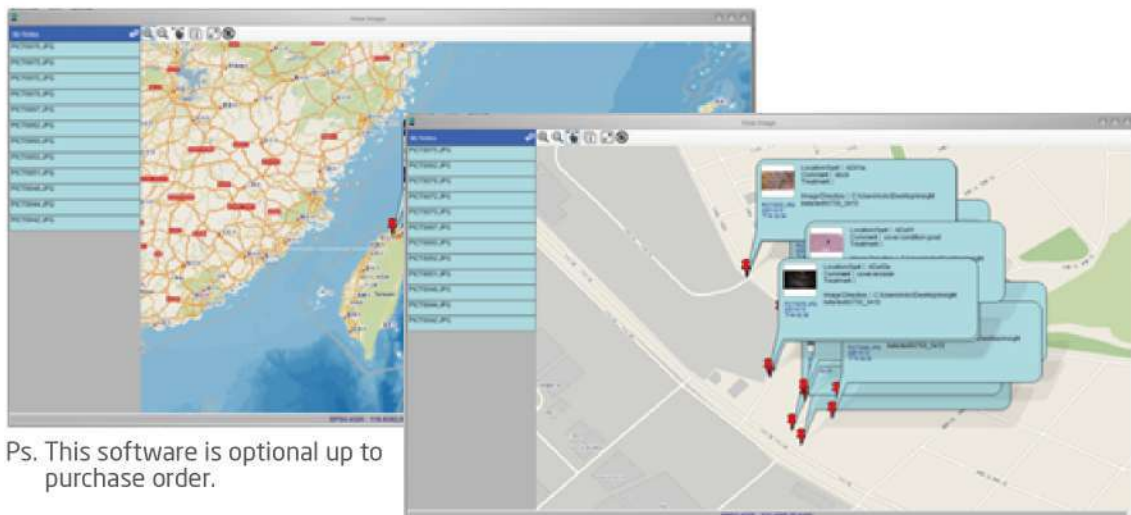


Location Management



Keep an overview of all inspected objects in large projects.

Images can be GPS tagged and laid out on a map. There, you can easily see different locations, the associated photos, and comments made to these photos.



Ps. This software is optional up to purchase order.

Innovation

Backside Camera

The X750 possesses a powerful Backside Camera on the backside with 2560*1440 pixels giving you the ability to take photos from greater distances. The built-in GPS function allows you to tag images and map them out in our Insight software. That creates a better overview in even the most difficult inspections and ensures never getting lost in large areas (for example, offshore wind farms).



Best Image Viewing Experience

5" full-touch screen

The X750 features a 5" high-resolution LCD touch-screen that provides an excellent viewing experience.

Manual Exposure

It also features the same manual exposure known from our X2000, which works similar to that of a smartphone. It allows you to adjust the exposure with only one click on the screen. That makes it not only very helpful but also very convenient to use.



True Sight

Super Resolution & Fine Image Quality



6.0 mm probe (Front view)

-Still image & Video output resolution: 2560*1440



3.9 mm probe (Front view / Dual View)

-Still image & Video output resolution: 1600*1600



Enjoy breathtaking video quality and razor-sharp images without compromising probe size and maneuverability.

Our inspection probes combine a flexible design and impeccable image quality that will add value to your next inspection.

Diameters of 6mm & 3.9mm, lengths of up to 7m, and impressive resolution enable our probes to be perfectly adapted to your specific needs.



In addition, our insertion probes are easily interchangeable and offer different field of view (FOV) and depth of field (DOF) options, making them a suitable partner for even the most complex applications where contrasting probe requirements must be considered.



Durability



Tungsten Rigidity

All X750 insertion probes are tungsten braided and are waterproof up to 1m depth for 30 minutes. The natural abilities of the tungsten metal give our insertion probes increased heat (up to 100°C) - and extensive corrosion resistance. The strength and density of tungsten extend the probe lifespan significantly, protecting them from scratching or abrasion.

Shorter Distal End & Bending Radius

The bending angle is crucial to ensure maneuverability within the object and to enhance the field of view. Therefore, our insertion probes offer a shortened distal end and a bending angle of up to 140° and are available in 3.9mm and 6.0mm diameters.

Dual Light Sources & Mirror Adapters

6.0 mm probes come with front & side LEDs that brighten even the darkest spots during an inspection and are compatible with our side-view and dual-view mirror adapters.



IP54 Water/Dust Proof



Enhanced tube strength release



Carrying tube / tip folder

Enhanced Tube Strength Release

Our insertion probes feature an enhanced tube strength release protecting the tube from overly bending, even when used without the probe stand, and ensures that the articulation works flawlessly.

Carrying Tube / Tip Holder

The holder underneath the probe stand allows you to neatly tuck the probe tube and the probe tip away so that the X750 can easily be operated in one hand or hang onto the neck strap when, for example, climbing ladders or moving in other hard to pass terrain.

IP54 Protection

The base unit of the X750 also offers enhanced protection and is IP54 certified, allowing you to work outside even in harsh conditions.

Trolley Case & Accessories



1 Lithium-ion Batteries:

Quickly removable batteries; that provide 3 hours of operation each.

2 Probe Adapters:

The X750 comes with a Side View and Dual View Mirror adapter as well as a Pin adapter for measurements. (Only for 6.0 mm probe)

3 Accessory Box:

A variety of different power adapters are available to recharge your X750. A mini-HDMI cable, EMI core*4(detachable for USB or HDMI cable's connector ends), a USB Type-C cable, a memory card, and a cleaning kit are also part of the package.

4 Neck Strap:

The X750 comes with a detachable neck strap that can be easily attached or detached.

5 Rigid Sleeve:

Rigid sleeves are available for 6.0mm and 3.9 mm probes. Each rigid sleeve comes with an additional extender for the sleeve.

6 Trolley Case:

The trolley case is lightweight and dust, and waterproof. It is rugged and ensures that your X750 stays safe during your travels.

Specifications

Base Unit	
Dimension	L=327.5mm W=152.8mm H=201.3mm
Weight	1230g (w/2m tungsten tube)
Water Resistance	IP 54 (whole set assembled)
Display	5 inches / detachable touchscreen / 800*480 resolution
Function Buttons	Power ; Reset (pin button)
I/O Port	Micro-SD memory card slot USB Type-C (power in/data out) Mini-HDMI (Av output)
Tip Temperature on screen	60°C / 80°C / 100 °C - 3 Level Warning
Wi-Fi	802.11 b/g/n
App	VideoscopeNow
LED Indicators	Green - working / fully recharged Red - low power / recharging
Microphone	Built - in (on/off switch in settings menu)
Backside Light	LED
Backside Camera	2560*1440 .JPG
GNSS	GPS, GLONASS Dual Mode
Joystick	
Articulation	Full ways mechanical control
Function Buttons	4 Buttons: Brightness + / Brightness - / Snapshot /Record / Custom Self - Definition
Articulation Control	Joystick/ Lock - Stop & Go
Battery (One Piece)	4900mAh replaceable Li - ion Battery
Working Time	3 Hours of Operation (with 2 m/ 3 m; decrease with longer probes)
Working Temperature	Battery powered : -10°C~45°C. Battery charging: 0°C~40°C
Battery /Charger Set	
Dimension	117.5*76.8*69.7 mm
Weight	Full Set (Batteries w/ Charger Set): 393g; Battery 113g; Charger Set: 165g
Charging Time	6 Hours for 2 Batteries / 3 Hours for 1 Battery
LED Indicator	Red: Charging / Green: Fully Charged

360° Articulation Probes				
Option Items	60D4W-F_TU-M	60D4W-F_TU-F	39D4W-F_TU-M	39D4W-FS_TU-M
Probe head diameter	6.0 mm	6.0 mm	3.9 mm	3.9 mm
Probe head length	19.3 mm	19.3 mm	13 mm	21.6 mm
Direction of View	Front view	Front view	Front view	Front view / 90° Side view
Illumination	Front / Side LEDs	Front / Side LEDs	Front LEDs	Front / Side LEDs
Field of View (FOV)	90°	90°	120°	120°
Depth of Field (DOF)	10 mm~100 mm	25 mm ~ ∞	5 mm ~ 100 mm	5 mm~100mm
Still image resolution (.jpg)	2560*1440		1600*1600	
Video resolution (.mov)	2560*1440		1600*1600	
Length	2M/3M : (5M/7M build to order)	2M/3M : (5M/7M build to order)	1.5M / 3M	1.5M
Articulation angle	2M / 3M: Full way>120° : 5M / 7M: Full way >80°		Full way>140°	Full way>120°
Probe head material	Stainless steel			
Probe material	Tungsten braided			
Joystick console dimensions	(W*D*H)139.4*193*84.2 mm (w/o SR and insert tubes)			
Joystick buttons	Brightness +, Brightness -, snapshot / record			
Lock and move	Joystick / Unlock switch on console			
Operating temperature	In air: -10 ~ 100°C, In water: 10 ~ 30°C			
Dust and water proof	Joystick console: IP 54; Insert Tube: under water 1 m for 30 minutes			
Relative humidity	Max 95% non-condensing			
Liquid resistance	Operable when exposed to machine oil, light oil or 5% saline solution			
Storage temperature	10°C ~ 70°C			



Are you ready to take your inspection to a new level?

website: www.mitcorp.com.tw

✉ e-mail: sal@mitcorp.com.tw

2F., No.75, Wenhua 1st Rd., Guishan, Taoyuan 333, Taiwan
T+886-3-328-7177 F+886-3-328-7176

© 2020 Medical Intubation Technology Corporation (Mitcorp).
All rights reserved. Design and specifications are subject to change without prior notice.
Actual product and accessories may differ from illustrations. Errors and omissions excepted.
Reproduction in any manner without written permission of Mitcorp is strictly forbidden.



Mitcorp



Mitcorpglobal



Mitcorpglobal



SPECIFICATIONS

X1000 PLUS SYSTEM

Features	Description
LCD	7"LCD (800 x 480)
Snapshot	640 * 480, jpeg
Recording	640 * 480 , MPEG4 (with audio)
Dimensions	240 * 154 * 47mm
System weight	1.3kg (2.86 lb)
Dust & Water proof	IP57
Drop resistance	1m
Battery	Rechargeable Li-Battery
Working temperature	0~60 °C
Storage temperature	0~60 °C
Charging temperature	10~60 °C
Relative humidity	Max 95% , non condensing
USB	Mass storage mode / Webcam mode
Storage	SD card, up to 32G
AV output	NTSC / PAL
Audio input	Built-in microphone
Brightness Adjust	8 levels (5+3 Boost levels)

360 ARTICULATION TUBE

Features	Description
Probing head diameter	6.0mm
Tube length	2m/ 3m
Articulation	Full ways, ≥110°
LED	Front / Side
Button	Snapshot / LED + / LED -



PRM100 PIPE INSPECTION CAMERA

Features	Description
Probing head diameter	10.0mm (w/o mirror) 10.5mm (w/ side view mirror)
Tube length	15m
Articulation	0
LED	Front / Side
Buttons (on meter)	Power m/ft switch LED backlight



ACCESSORIES



Also include: Usb cable, AV cable, clean set, SD card, user manual, installation driver

X1000 Videoscope system PLUS

OPERATIONS ON THE FINGERTIPS



Mitcorp
INSPECTION REDEFINED



CLEARNESS



SHARPNESS



BRIGHTNESS



Our outstanding image processing technology implementation to sharpen the edges and optimize the image quality for best inspection result

8 levels of light adjustments to different inspection conditions, the 5 basic levels works for most inspections; 3 advanced levels will expand the exposure time for extremely dark environment

BOOST+

Ideals of extremely dark environment inspections



COMPARE

The side- by-side comparison of a still image with the live view allows user to verify the difference of an area at different times



*You can adjust the stored image frame during your inspection on the screen

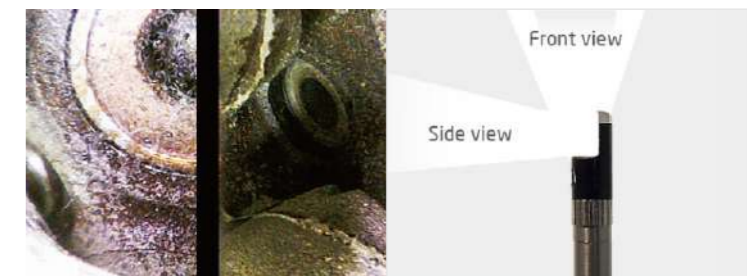
NEGATIVE+

Contrast enhancement to stand out cracks and details



DUAL VIEWS IN DIVIDED SCREENS

To see front view and side view simultaneously (designated lens is need)



WHITE BALANCE ADJUSTMENT

You can adjust white balance via operation interface



Default

Warm

hyperion[®]

PARTICLE FREE - To eliminate the dust on the screen without cleaning the mirror.



w/o Particle free

Particle free

SKYPE READY

Simply connect to internet, you can Skype out to communicate with another PC anywhere



ADD NOTE

To put comparison information or comments on the captured image



KEY FEATURES

- Capacitive touch technology for best performance and durability
- 7" TFT LCD
- 1m drop resistance
- Sharp, clear, bright images
- 800x480 display resolution
- 640x480 video/photo resolution
- Rechargeable Li-battery
- Skype communication ready
- LED backlight function keys: ideal for dark environment operation
- USB camera: Support webcam device to remote access for data sharing and real-time diagnose
- USB reader: Simply connect to your PC to retrieve your data from the SD card, card reader is not necessary
- Neck/Hand strap: convenience and great for operation
- Light weight: only 1.3kg



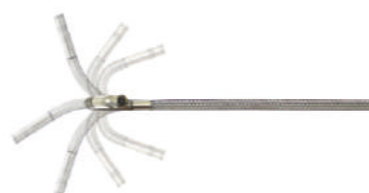
Touch screen operation



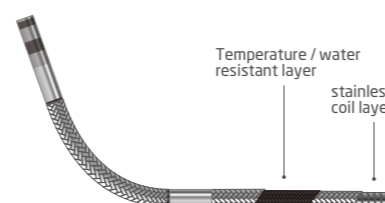
Can be operated under direct sunshine



- Fast and easy joystick operation - provide snapshot / light+ (boost) / light- functions on the controller
- IP55 protection



- 360° articulation
- Provide flexibilities in narrow space inspection



- High density stainless steel braided tube provide durability, flexibility and also rusty, water and temperature resistant



Capacitive Touch technology for best performance and durability.
Adjustable magnetic stand provide inspection flexibility.
IP55 protection, can be operated in rain.



IP55 Protection



Touch screen



Magnetic stand

INNOVATIVE TECHNOLOGY

The world's leading innovative design for non-destructive inspection.

Tube options



5.5mm Macro tube



360° articulation

Data management



Delete multiple files

Sharpness



Digital image processing systems

Negative +



Contrast enhancement to stand out cracks and details

Full lamination touch screen



Full lamination panel, can be operated under direct sunshine

White balance adjustment



You can adjust white balance via operation interface

SPECIFICATIONS

X500 SYSTEM

Dimensions	160mm x 120mm x 55mm
Weight	745g
Display	5" TFT LCD (VGA), 800x480 resolution
Power	Rechargeable Li battery Power consumption DC 5V 3A
Waterproof	Can be operated in rain
Video out	NTSC & PAL / AV OUT
Storage	SD card(SDHC), up to 32G
Video / Photo file format	.avi / .jpg, 640 x 480
Working temperature	0~60 °C
Storage temperature	0~60 °C
LED indicator	Green LED : Power On
	Red LED : Charging System

360 ARTICULATION TUBE

Probing head diameter	6.0mm
Tube length	2m / 3m
Articulation	Full ways, 110°
LED	Front / Side
Button	Snapshot / LED + / LED -

5.5 mm MACRO Tube

Probing head diameter	5.5mm
Tube length	1m / 2m
LED	Front / Side

Mitcorp
INSPECTION REDEFINED

www.mitcorp.com.tw