



Capacitive Touch technology for best performance and durability.
Adjustable magnetic stand provide inspection flexibility.
IP55 protection, can be operated in rain.



IP55 Protection



Touch screen



Magnetic stand

INNOVATIVE TECHNOLOGY

The world's leading innovative design for non-destructive inspection.

Tube options



5.5mm Macro tube



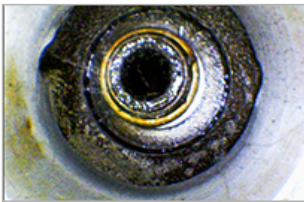
360° articulation

Data management



Delete multiple files

Sharpness



Digital image processing systems

Negative +



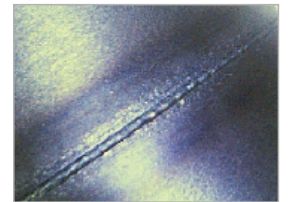
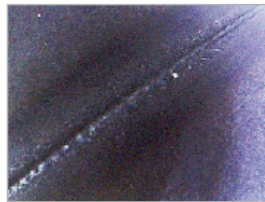
Contrast enhancement to stand out cracks and details

Full lamination touch screen



Full lamination panel, can be operated under direct sunshine

White balance adjustment



You can adjust white balance via operation interface

SPECIFICATIONS

X500 SYSTEM

Dimensions	160mm x 120mm x 55mm
Weight	745g
Display	5" TFT LCD (VGA), 800x480 resolution
Power	Rechargeable Li battery Power consumption DC 5V 3A
Waterproof	Can be operated in rain
Video out	NTSC & PAL / AV OUT
Storage	SD card(SDHC), up to 32G
Video / Photo file format	.avi / .jpg, 640 x 480
Working temperature	0~60 °C
Storage temperature	0~60 °C
LED indicator	Green LED : Power On
	Red LED : Charging System

360 ARTICULATION TUBE

Probing head diameter	6.0mm
Tube length	2m / 3m
Articulation	Full ways, 110°
LED	Front / Side
Button	Snapshot / LED + / LED -

5.5 mm MACRO Tube

Probing head diameter	5.5mm
Tube length	1m / 2m
LED	Front / Side

Mitcorp
INSPECTION REDEFINED

www.mitcorp.com.tw