

LED illuminated magnifier

# MAGNALIGHT<sub>series</sub>

MAGNALIGHT series is the top-of-the-line model with round lenses.

Dedicated machine for Magna wide lens with AR coating on  $\Phi 150$  large aperture lens

**AR** Coat  
standard

## MAGNA WIDE LENS

MAG2XAR

MAG3XAR

MAG4XAR

Select the lens magnification and combine it with the main unit.

Example: **MGL - F 2XAR**

Series name    Type name    Magnification

We also sell only the main body without a lens.



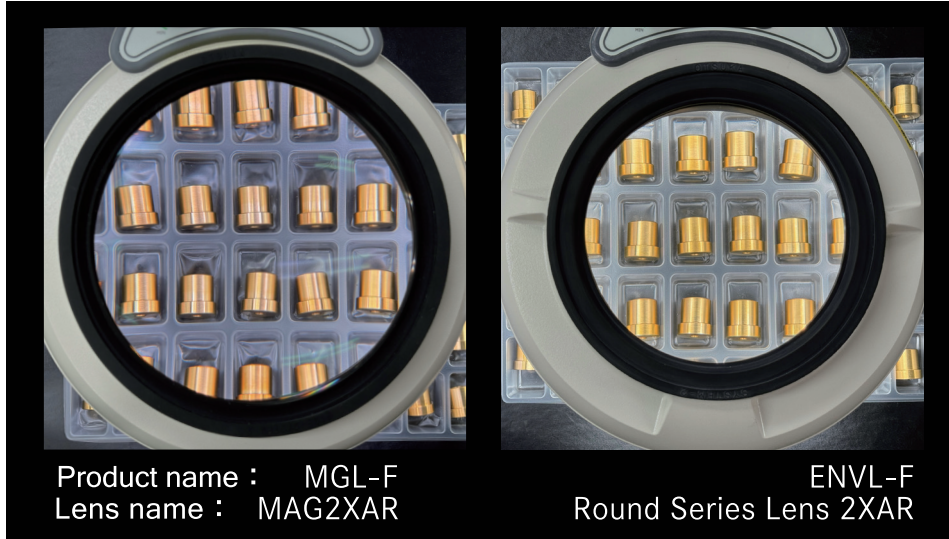
- Lens Dimensions (mm) :  $\phi 150$
- Lineup of AR-Coated lens : Standard feature
- Dimming function : 100% - 0%
- Input voltage range : AC100 - 240V\* · 50/60Hz  
(\* When using at a voltage of 125V or higher, it can be handled by changing the cord with a plug.)
- AC Adapter Dimensions (mm) : 87×45×34  
Power Cord length (mm) : 1800 (AC side) 1800 (DC side)

The lens part of the image is synthetic.

# MAGNALIGHT Series features.

The Magna Wide Lens System, a dedicated lens for the MagnaLight series, combines a  $\Phi 150$  mm large-aperture lens with a clear AR (anti-reflection) coating to meet user expectations.

## Comparison of visibility between MAGNAWIDELENS and Round series Lens.



The image shows a comparison of the field of view when the same workpiece is observed with the "MAG2XAR" (left), a lens specially designed for the Magnalight series, and the "Round Series Lens 2XAR" (right), which is compatible with the ENVL and SKKL series. Compared with the "Round Series Lens 2XAR" with a diameter of  $\Phi 130$ , the  $\Phi 150$  "MAG2XAR" boasts a wider field of view, as can be seen from the number of workpieces that can be observed. The outer diameter of the outer frame is the same for the Magnalight and ENVL series.

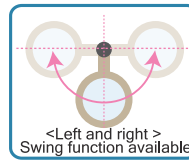
Magnification depends on the observation distance. Observation distances are adjusted for photography.

## Lineup

### MGL-B

With table stand

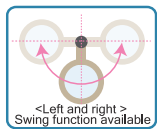
Product Dimension (W x H x D): 188x331x320mm  
Weight: 2.1kg (Excluding lens)



### MGL-F

Free arm and clamp type

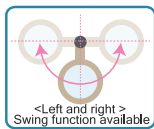
Product Dimension(Arm length): 1025mm  
Weight: 2.4kg (Excluding lens)



### MGL-CF

Compact free arm and clamp type

Product Dimension (Arm length): 705mm  
Weight: 2.1kg (Excluding lens)



### MGL-FD

Free arm and fixed desk holder type

Product Dimension (Arm length): 1015mm  
Weight: 2.2kg (Excluding lens)



### MGL-D

Desk holder type

Product size (a pillar / a cross bar)  
: 376mm / 290mm  
Weight: 1.3kg (Excluding lens)



### MGL-MS

Magnet stand type

Product size (a pillar / a cross bar)  
: 370mm / 290mm  
Weight: 3.2kg (Excluding lens)



### MGL-ST

Long bar and clamp type

Product size (a pillar / a cross bar)  
: 345mm / 290mm  
Weight: 1.4kg (Excluding lens)

Product photos do not have the same proportions.

# MAGNALIGHT