

LED coaxial illuminated magnifier

AR^{Coat}
standard

SURFLIGHT series

Magnifiers are finally coming to coaxial illumination



Lens magnification

SL130B · SL130F

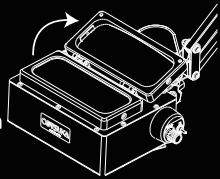
: Switchable between 2x and 4x

SL120B · SL120F : 2x fixed

2XAR (line magnification)

Lift the upper lens.(SL130B,SL130F)

Eye-point :150mm
Working distance :100mm



4XAR (line magnification)
Use by layering 2 lenses.(SL130B,SL130F)

Eye-point :150mm
Working distance :60mm



The light in the image is a composite of the image of coaxial illumination.

- Lens dimensions(mm) : 130×50 Effective area
- AR-coated lens Line Up : standard feature
- Dimming function : 100% - 0%
- Input voltage range : AC100 - 240V* · 50/60Hz
(* When using at a voltage of 125V or higher,
it can be handled by changing or purchasing a
power cable separately.)
- AC Adapter Dimensions(mm) : 99×47×32
- Power Cord length (mm) : 1800 (AC side) 1200 (DC side)

SURFLIGHT Series features.

It is a fusion of an illumination magnifier and coaxial epi-illumination.

It clearly captures the contours of the engravings and the unevenness of the observed object. The light irradiated on the concave area can be captured and observed as it is.

Magnification can be switched between 2X and 4X.

The lens is rectangular, close to the human field of view, and allows both eyes to see the object being observed in three dimensions.

The lens is coated with AR coating "anti-reflection coating" to reduce unpleasant glare.



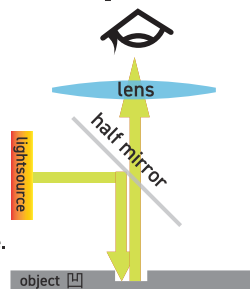
SL130B

A Comparison of Coaxial Illumination and Ring Illumination

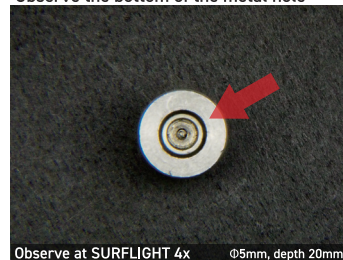
Coaxial Fall Illumination [SURFLIGHT Series]

Features

- There is no darkening of concave areas.
- Since the irradiation direction is constant
- Since the irradiation direction is constant, reflected light from specular workpieces can easily escape.



Observe the bottom of the metal hole



Observe at SURFLIGHT 4x ϕ 5mm, depth 20mm

An observation of the surface of an object

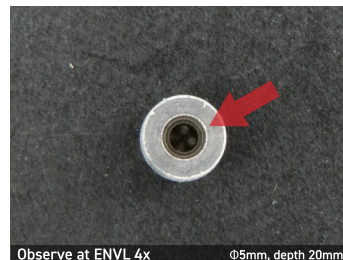
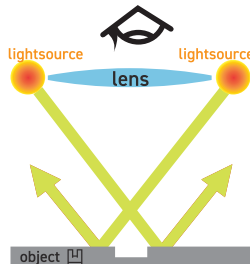


Observe at SURFLIGHT 4x Carbon-like surface

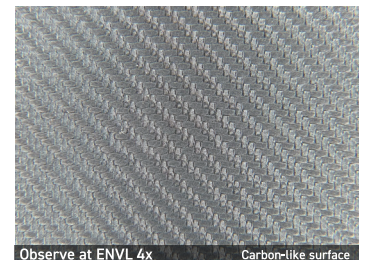
Ring Illumination [ENVL Series]

Features

- Uniform illumination of the object.
- Good color reproducibility.
- Suitable for work lighting as it does not cast shadows.



Observe at ENVL 4x ϕ 5mm, depth 20mm



Observe at ENVL 4x Carbon-like surface

Lineup



SL130B

With table stand

Product Dimension(WxHxD)
:188x331x320mm
Weight:3.0kg



SL130F

Free arm and clamp type

Product Dimension(Arm length)
: 856mm
Weight: 3.1kg



SL120B

With table stand

Product Dimension(WxHxD)
:188x331x320mm
Weight:2.7kg



SL120F

Free arm and clamp type

Product Dimension(Arm length)
: 856mm
Weight: 2.8kg

SURFLIGHT