

No. 8191-00 4-ch Datalogger Model SK-L400T

This temperature datalogger uses K-type thermocouple sensor. Four probes can be connected at the same time, and four channels can be displayed on the large LCD.

Features

● Simultaneously measures temperature at four locations

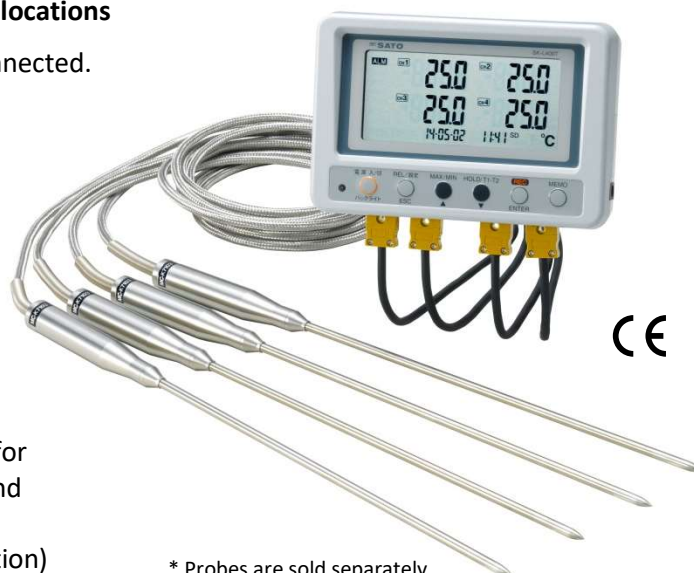
Up to four K-type thermocouple probes can be connected. Simultaneously displays four temperatures from four locations (channels) on the large LCD for easy reading. By using the ASTM (former ANSI) miniature connector for the K-type thermocouple, various optional probes can be connected.

● Logging the measured values on the SD card

The measured values can be logged on the SD card installed in the unit.

By using the analysis software "4ch DATALOGGER for Windows" included with the unit, graph plotting and data analysis can be easily done.

(Exclusive software in English version is in preparation)



* Probes are sold separately

● Manual logging, preset logging, memo function

Equipped with manual logging, preset logging that enables you to set the time at which to start or stop logging, and a memo function for quickly logging the current measured value. Can be used for various data collection operations.

● Alarm issuance at upper and lower limit temperatures

Different alarm values (upper and lower) can be set for the four channels. If the measured value goes out of the set limit value, a buzzer sounds and the LED lamp flashes to alert.

● Display of various calculation results

Display of the maximum (MAX) or minimum (MIN) value, relative value (REL function), temperature difference (T1 – T2 function), offset function.

● Backlight function

The backlight makes it easy to read in dark places.



SATO KEIRYOKI MFG. CO., LTD.

3-4, Kanda-kajicho, Chiyoda-ku, Tokyo 101-0045 Japan

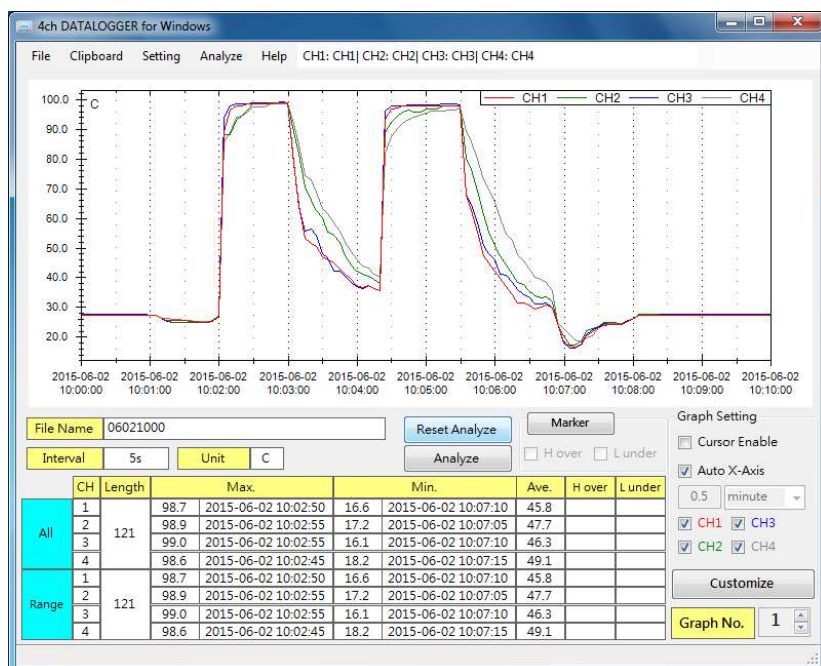
<https://www.sksato.co.jp/en/>

Specifications

Display range	−202.0 to 1,372°C
Resolution	0.1°C (−202.0 to 999.9°C) 1°C (other)
Display accuracy	±(0.3%rdg + 1)°C within 23°C ±5°C * Measuring accuracy depends on the probe connected. * +2%rdg of error is added when connected with a surface probe.
Display sampling	Approx. 1 second
Temperature coefficient	±(0.01%rdg + 0.1°C) / °C
Sensing element	K type thermocouple Connector: ASTM (former ANSI) miniature connector for thermocouple
Number of channels	4
Logging interval	In seconds (1, 2, 5, 10, 15, 30) and in minutes (1, 2, 5, 10, 15, 30, 60, 90)
Operating ambient	0 to 50°C, lower than 85%rh (no condensing)
Storage ambient	0 to 50°C, lower than 85%rh (no condensing)
Power requirement	4 AA alkaline batteries or nickel-hydrogen batteries; AC adapter (optional)
Battery life	Approx. 500 hours In use of alkaline batteries under normal temperature at 1-min. interval (backlight: OFF, display: OFF)
Weights (approx.)	420 g (including batteries)
Dimensions	Approx. 158 (W) × 106 (H) × 40 (D) mm
Material	ABS resin
Accessories	<div> <div>- CD-ROM (data analysis software)</div> <div>1</div> </div> <div> <div>- AA alkaline batteries</div> <div>4</div> </div> <div> <div>- SD card (8GB)</div> <div>1</div> </div> <div> <div>- Carrying case</div> <div>1</div> </div> <div> <div>- Instruction Manual in English</div> <div>1</div> </div>

* Option: No. 8191-90 AC adapter Model AD-09650-2 for exclusive use with SK-L400T

Graph display on the PC Screen



Minimum system requirements as below.

- OS : Windows10 (32-bit/64-bit)
Windows 8/8.1 (32-bit/64-bit)
Windows 7 (32-bit/64-bit)
Windows XP (SP3 or later)
- CPU : Capable of properly running one of the above OSs
- Memory : Capable of properly running one of the above OSs
(Recommendation) :
Windows XP : 512MB or more
Windows 7/8/8.1/10 : 2GB or more
- Hard disk drive : 150MB or more free space
- Internet environment : NET Framework 3.5 being installed.
* When .NET Framework 3.5 is not activate, install it via internet at installation of this software.

SATO KEIRYOKI MFG. CO., LTD.

3-4, Kanda-kajicho, Chiyoda-ku, Tokyo 101-0045 Japan

<https://www.sksato.co.jp/en/>