

X3000 – The world's first dual view 3D measurement videoscope

February, 2025



LEGA Corporation Co., Ltd.
บริษัท เลกะ คอร์ปอเรชั่น จำกัด

1/28-29 อาคารบางนาธานี ชั้น 14 ห้อง เอ,บี1 ซอยบางนา-ตราด 34
แขวงบางนาใต้ เขตบางนา กรุงเทพมหานคร 10260
EMAIL : shop@legatool.com | TEL: 02-746-9933 | Line ID: @LEGA



Mitcorp



X3000 3D Measurement Videoscope

- Patented Dual-Lens Measurement
- High-Definition 3D Reconstruction
- Easy & Fast Measurement Data Capture
- Rear-Mounted Fiber Optic LED

Product Appearance

- **7" Touchscreen** – Full-screen, full-size 3D model display for an immersive inspection experience.
- **360° Articulation Probe** – Fully interchangeable, providing unmatched flexibility.
- **Detachable & Rechargeable Battery** – Ensures continuous operation for extended inspections.
- **Versatile Design** – Use it handheld or standalone, adapting to any work environment.



Dual-Lens Measurement

- The innovative dual-lens design allows you to capture multiple viewing angles without changing probes.
- The front camera provides deep inspection, while the side camera offers lateral observation.
- Combined with 3D measurement, this ensures accurate and comprehensive data collection, reducing errors and rework costs.



High-Definition 3D Reconstruction

High-resolution 3D reconstruction technology, making it easier and more precise than ever to select measurement points. You can inspect details from multiple angles, ensuring every measurement is accurate and reliable.

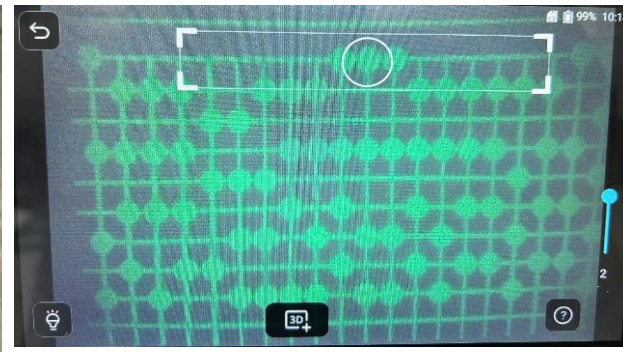
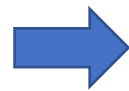


Easy & Fast Measurement Data Capture

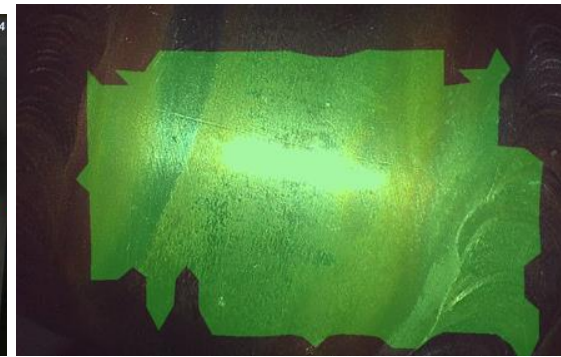
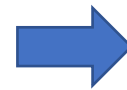
In simple 3 steps, you can generate a detailed 3D reconstruction without any complex setup or tedious procedures. Simply capture and process in less than 10 seconds.



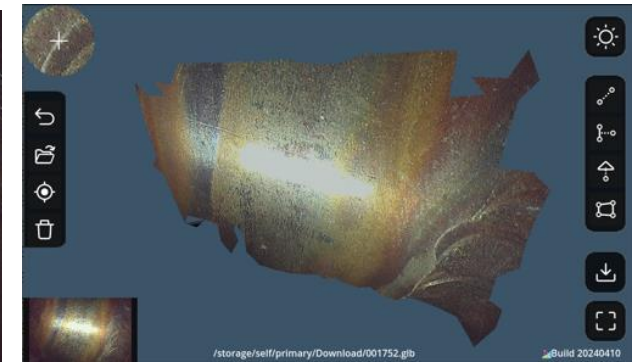
Live view



Step 1:
3D focus



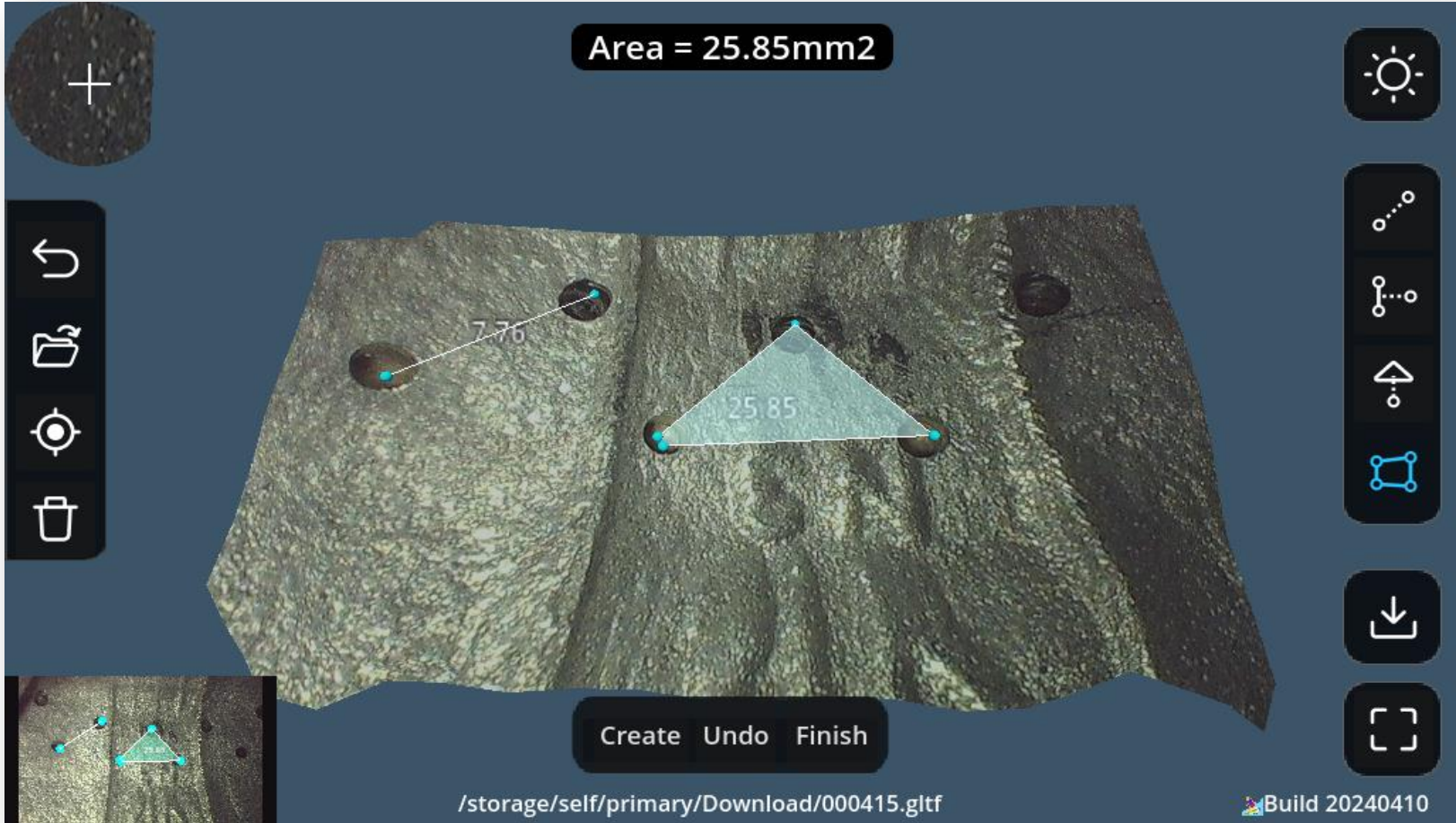
Step 2:
Success Area
Evaluation



Step 3:
3D reconstruction

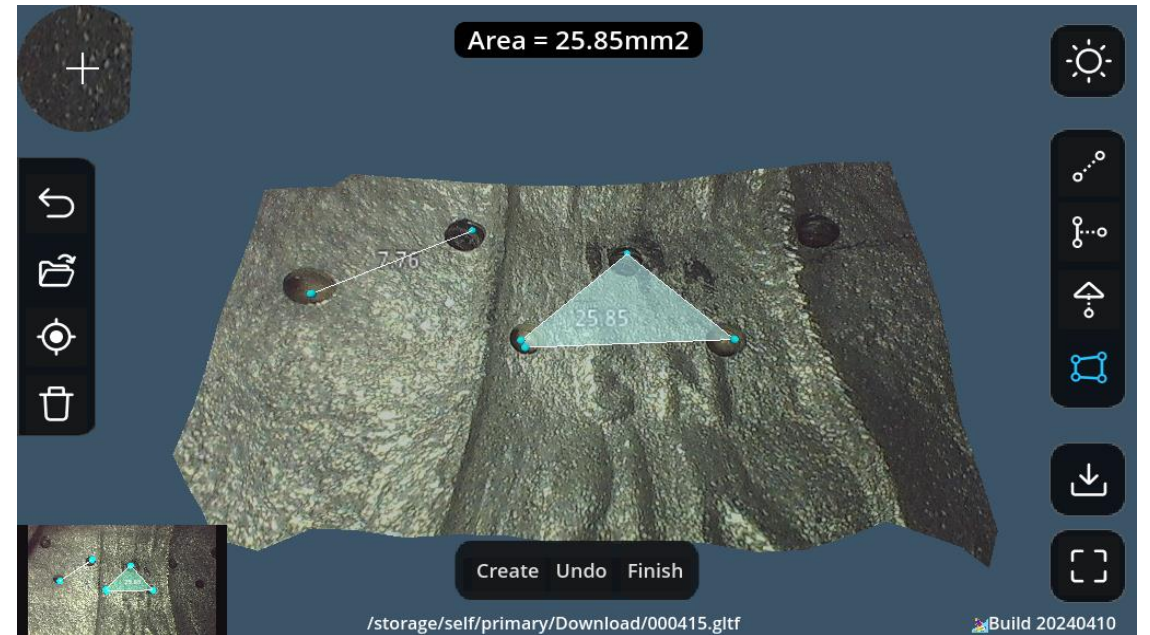
Flexible 3D Measurement Functions & Interface

Supports various measurement modes: Length, Point-to-line, Depth, Area and Protractor.



Exceptional Image Quality

- Comprehensive image adjustments:
Brightness, Saturation, Contrast, White-balance, and Negative mode.
- 3D reconstruction quality comparable to 2D imaging, ensuring high-detail visualization.



Specification

Device	
Dimension	L:355 W:216 H:214 (mm)
Weight	2,200 g
Waterproof	IP 54
Display	7" Touchscreen
I / O Port	Power button
	Micro SD memory card slot
	USB Type-C (data transmission)
	Micro-HDMI (AV output)
	Reset button (pin push)
Tip Temperature warning	Low / Middle / High warning on screen display
Power indicator	0 ~ 100% indicator on screen display
Microphone	Built-in (on / off switch by setting menu)
Memory media	External Micro-SD card. Up to 128 GB
Compatible probes	60D4W-FSM-3M-TU-M / X3000
Battery	
Dimension	L:125 W:114 H:58 (mm)
Weight	520 g
Charging time	4.7-4.33hrs (2.5A-3A) *Power adaptor: output 45W, 3A
Discharging time	Typical 3 hours operation
LED Indicators	Red:charging / Green:full charged / Flashing:Abnormal

Specification

Probe	
Still Image resolution	Front & Side: 2560*1440
Video record resolution	Front & Side: 1920x1080
View angle	Front (0°) + Side (90°)
Tip length	25 mm
Outside Diameter (OD)	6 mm
Probe Length	3 m
Probe Construction	Tungsten steel out-braid
Field of View (FOV)	95° ±5%
Depth of Field (DOF)	10 mm~∞
Tip Construction	Stainless steel housing. Front + Side 2 pairs: camera / light source / micro projector integrated packing
Illumination light source	Front: Fiber + backend LED. Side: LED on tip
Articulation	Full way mechanic joystick with lock button
Neck bending angle	<= 135°
Console Function Buttons	Trigger: snapshot / freeze / record; Round button: bright+ / bright- / custom hotkey
Waterproof	Camera tip: IP67 Device: IP54
Temperature resistant	Up to 100 °C

Specification

Regulatory	
Basic safety	CE / FCC
EMC	EN55032 / 24 , part 15B(ITE)
Environmental	WEEE / RoHS/REACH / CA65 / Conflict Minerals
Battery	UN38.3 (1.2M drop / 3M stacking / test summary) 、 PSE 、 IEC62133 、 BSMI 、 CCC
Operating Environment	
System Operating Temperature	0°C ~ 40°C with AC adapter
Tip Operating Temperature	-10°C ~ 100°C in air 10-30°C in water
Storage Temperature	0°C ~ 60°C
Battery Charging Temperature	0°C ~ 45°C
Package / Accessories	
HDMI cable (AV-out)	1.5m, HDMI 1.4a,TYPE A to TYPE D (Micro HDMI)
USB cable (data transfer)	1m, type C to type A
Carry case	Airtight trolley case
Micro SD card	Maximum 128G
User manual	English / Traditional Chinese
Battery	DC output 7.8V, 9800mAh*1
DC power adapter	USB PD 45W with Cable
Rigid sleeve	Detachable hand grip*1 45 cm stainless steel extension poles*2
Centering Devices (Optional)	O.D.: 18 mm*1 ; 38 mm*1 ; 65 mm*1

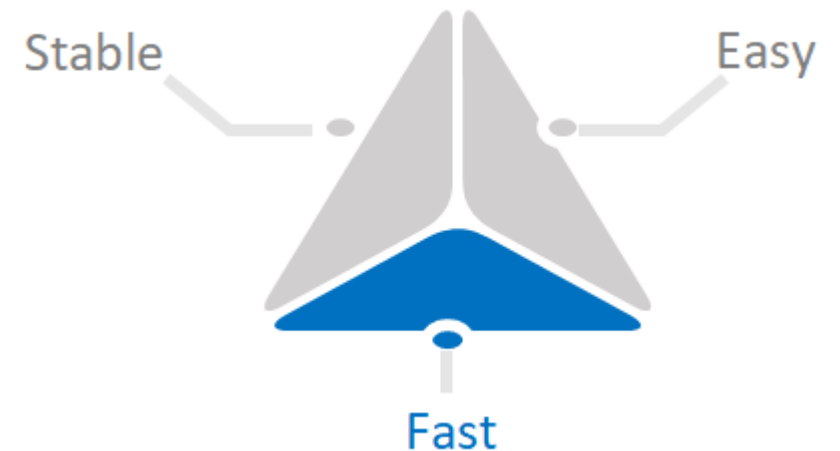
X3000 Advantages - Stable

- Instant measurement data capture – no need for static waiting time.
- Superior image clarity for accurate analysis.
- Rear-mounted fiber optic LED for stable, high-intensity illumination.
- Rugged, all-weather chassis, built for demanding environments.



X3000 Advantages - Fast

- 3D model built in just 10 seconds for rapid analysis.
- Streamlined, user-friendly interface for effortless operation.



X3000 Advantages - Easy

- World's First Dual-Lens, Dual-Measurement Design.
- Instant access to multiple measurement modes with dual-lens.
- Full-screen, full-size 3D model display for enhanced visualization.
- Intuitive 3D point selection, simplifying complex measurements.



Mitcorp X3000

The Next Generation of 3D Measurement Industrial Videoscopes!



LEGA
technologies for next

LEGA Corporation Co., Ltd.
บริษัท เลกะ คอร์ปอเรชั่น จำกัด

1/28-29 อาคารบางนาธานี ชั้น 14 ห้อง เอ,บี1 ซอยบางนา-ตราด 34
แขวงบางนาใต้ เขตบางนา กรุงเทพมหานคร 10260
EMAIL : shop@legatool.com | TEL: 02-746-9933 | Line ID: @LEGA



LINE: @LEGA



LEGATOOL.COM