

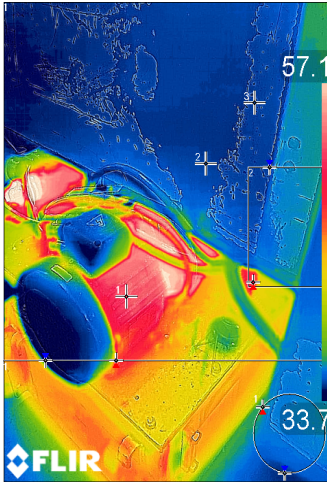
# Motor Preventive Maintenances

Factory 1 Section 2

Date 15/12/2018

20180223T111734.jpg

23/2/18 11:17



20180223T111734.jpg

23/2/18 11:17



### MEASUREMENTS (°C)

Spot 1	52.9
Spot 2	35.1
Spot 3	35.0
Box 1	
Max.	74.4
Min.	31.7
Box 2	
Max.	49.6
Min.	34.9
Avg.	36.4
Circle	
Max.	37.2
Min.	34.8
Avg.	36.2
Line	
Max.	49.1
Min.	33.5
Avg.	41.4
Spot1Temp.-Spot2Temp.	17.8

### PARAMETERS

Emissivity	0.90
Refl. temp.	22.0 °C
Distance	3.05 m
Relative humidity	50 %
Atmospheric temperature	20.0 °C
Transmission	0.00
IR window temperature	25.0 °C
IR window transmission	80 %
Lat.	N 13° 36.73'
Long.	E 100° 40.08'

Wissarut Seetha  
Application Engineer  
LEGA Corporation Co., Ltd.